

LEGEND

PROPOSED DRAINAGE

PIT

PROPERTY INLETS

EXISTING DRAINAGE

HOUSE CONNECTION

EXISTING HOUSE CONNECTION

RAIN GARDEN

PROPOSED SEWERAGE

EXISTING SEWERAGE

TEMPORARY SEWERAGE

WATER/NDW WATER/GAS/ELEC/NBN MAINS

EXISTING WATER/NDW WATER/GAS/ELEC/NBN MAINS

EXISTING FENCING

LOT RUNOFF DIRECTION

EXISTING BUILDING

VEGETATION TO RETAIN

TREE TO RETAIN

VEGETATION TO REMOVE

TREE TO REMOVE

BUILDING EXCLUSION ZONE

INTERSECTION TREATMENT

VEHICLE CROSSOVER

CUT/FILL AREA

NOTE:  
DRIVEWAYS TO BE CONSTRUCTED FOR LOTS 517, 553, 556, 560 & 562.  
DRIVEWAYS FOR LOTS NOT LISTED ARE TO BE COMPLETED AT TIME  
OF OCCUPANCY IN ACCORDANCE WITH TITLE RESTRICTIONS.

UNLESS SHOWN OTHERWISE ALL AREAS SHOWN ON THE  
DRAWINGS TO BE CUT OR FILLED ARE TO BE STRIPPED OF  
TOPSOIL TO A DEPTH OF 100mm. UPON COMPLETION OF  
THE BULK EARTHWORKS, THE TOPSOIL IS TO BE SPREAD  
TO A DEPTH OF 100mm OVER THE AREA & GRADED TO  
FINISHED LEVELS SHOWN ON THE DRAWINGS WITH A  
MINIMUM SLOPE OF 1 IN 150. ALL FILLING IS TO BE  
COMPACTED IN 150mm EQUAL LAYERS TO 95% OF  
AS1289.5.1.1 (STANDARD COMPACTION) & TEST RESULTS  
FORWARDED TO COUNCIL. REFER TO CUT AND FILL  
DETAIL ON SHEET 201 FOR AREAS OF FILL WORKS.

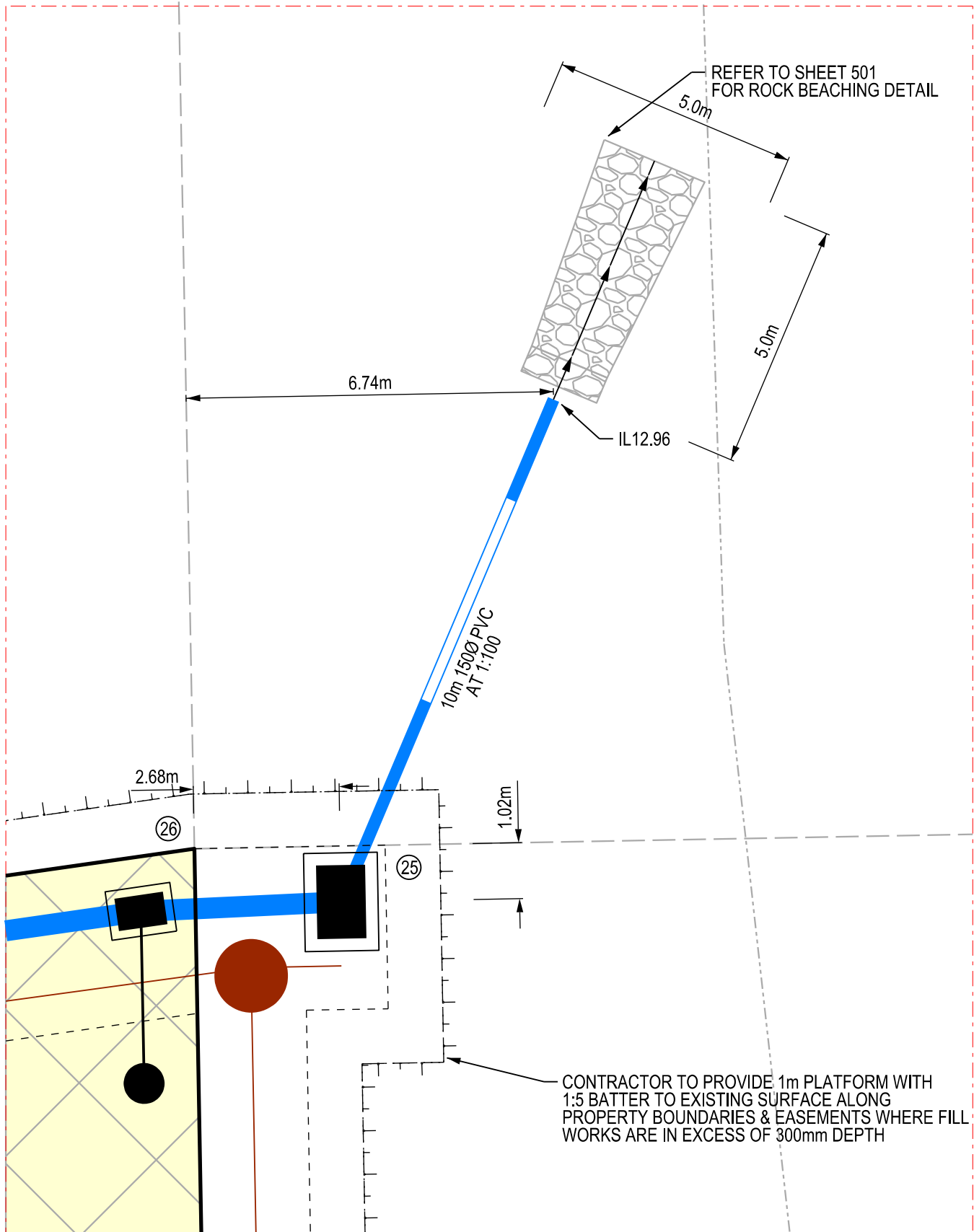
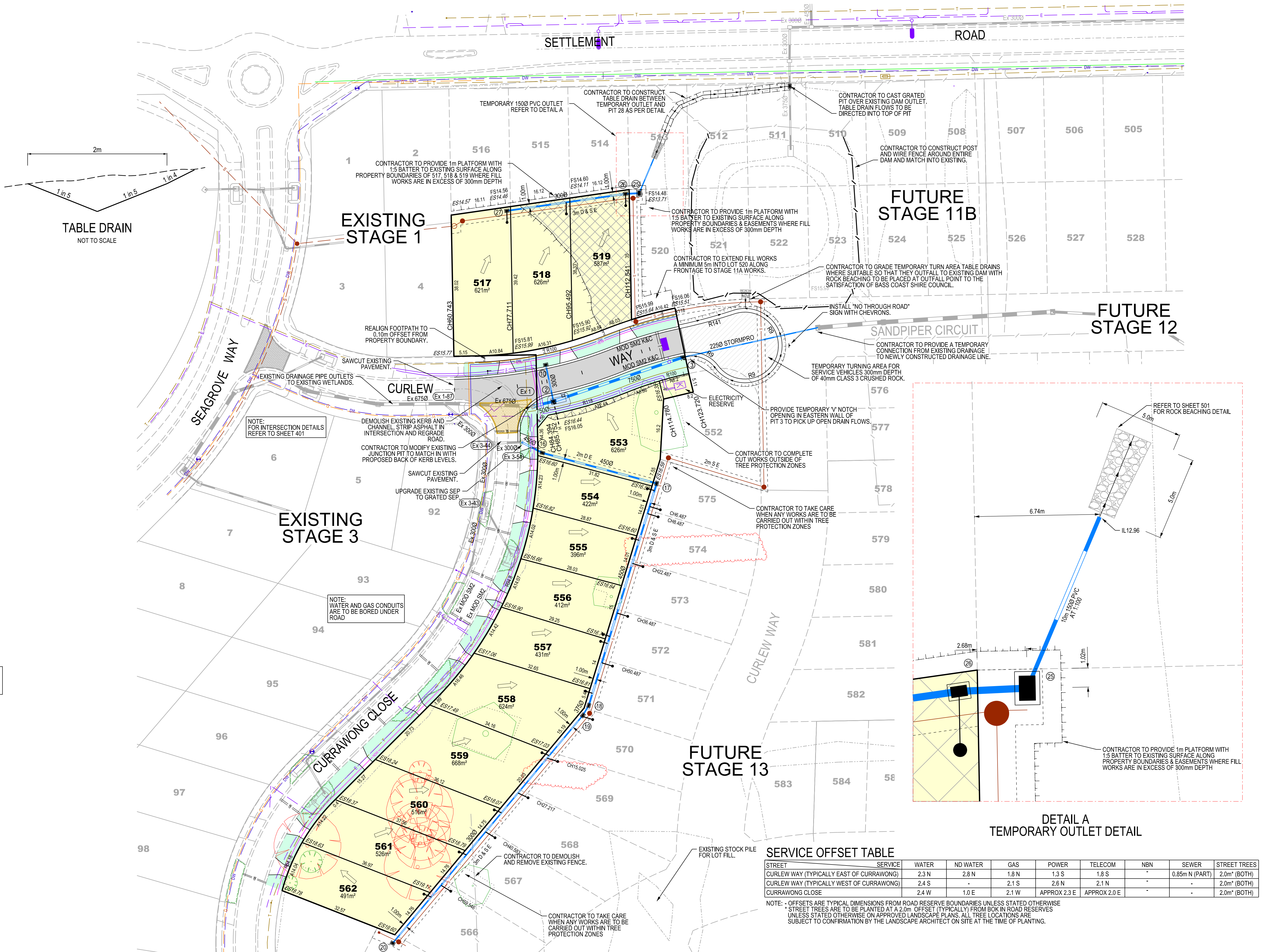
CONTRACTOR TO ENSURE THAT SERVICE CROSSINGS  
FOR CURRAWONG CLOSE ARE CLEAR OF EXISTING  
DRIVEWAYS AND GARDEN BEDS WHERE POSSIBLE.  
CONTRACTOR TO ENSURE NATURESTRIPS ARE  
REINSTATED TO THE SATISFACTION OF COUNCIL.

NOTE:  
ALL EXISTING VEGETATION MUST BE  
MAINTAINED UNLESS SPECIFIED OTHERWISE  
IN THE CONSTRUCTION MANAGEMENT PLAN

AREAS OF FILLING WORKS WITHIN LOTS  
ARE TO BE SURVEYED ONCE COMPLETED  
AND FINISHED LEVELS TO BE SHOWN ON  
AS CONSTRUCTED PLANS.

NOTE:  
CONTRACTOR TO REFER  
SHEET 004 FOR REMOVAL  
OF EXISTING PITS & DRAINS

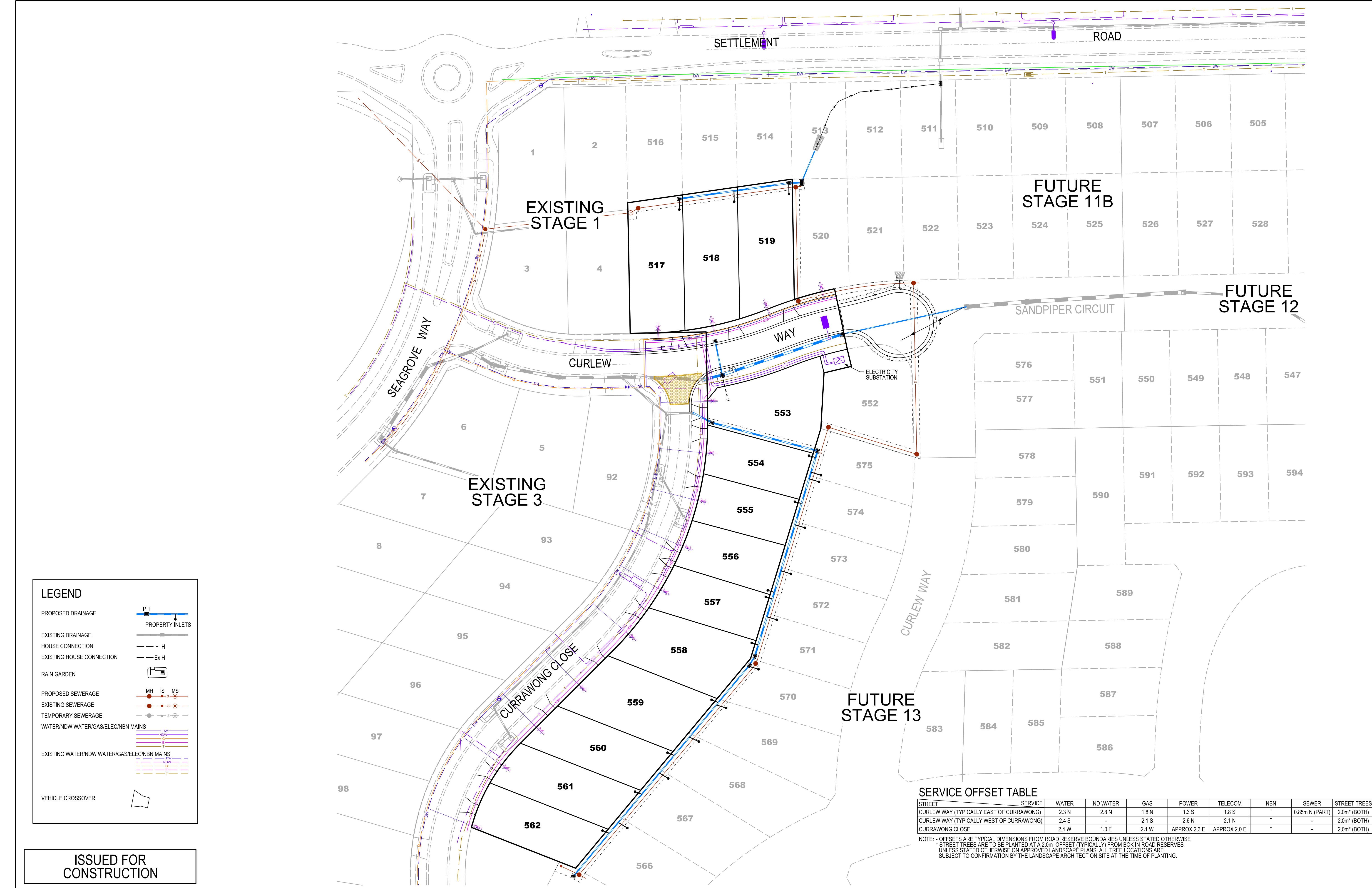
ISSUED FOR  
CONSTRUCTION



SERVICE OFFSET TABLE		WATER	ND WATER	GAS	POWER	TELECOM	NBN	SEWER	STREET TREES
STREET	SERVICE								
CURLEW WAY (TYPICALLY EAST OF CURRAWONG)	2.3 N	2.8 N	1.8 N	1.3 S	1.8 S	-	0.85m N (PART)	2.0m* (BOTH)	
CURLEW WAY (TYPICALLY WEST OF CURRAWONG)	2.4 S	-	2.1 S	2.6 N	2.1 N	-	-	2.0m* (BOTH)	
CURRAWONG CLOSE	2.4 W	1.0 E	2.1 W	APPROX 2.3 E	APPROX 2.0 E	-	-	2.0m* (BOTH)	

NOTE: \* OFFSETS ARE TYPICAL DIMENSIONS FROM ROAD RESERVE BOUNDARIES UNLESS STATED OTHERWISE  
STREET TREES ARE TO BE PLANTED AT A 2.0m OFFSET (TYPICALLY) FROM BOK IN ROAD RESERVES  
UNLESS STATED OTHERWISE ON APPROVED LANDSCAPE PLANS. ALL TREE LOCATIONS ARE  
SUBJECT TO CONFIRMATION BY THE LANDSCAPE ARCHITECT ON SITE AT THE TIME OF PLANTING.





LEGEND

PROPOSED DRAINAGE

PROPERTY INLETS

EXISTING DRAINAGE

HOUSE CONNECTION

EXISTING HOUSE CONNECTION

RAIN GARDEN

PROPOSED SEWERAGE

EXISTING SEWERAGE

TEMPORARY SEWERAGE

WATER/NDW WATER/GAS/ELEC/NBN MAINS

EXISTING WATER/NDW WATER/GAS/ELEC/NBN MAINS

VEHICLE CROSSOVER

PIT

PROPERTY INLETS

— H

— Ex H

MH

IS

MS

DW

NDW

G

T

S

DW

NDW

G

T

S

STREET		SERVICE	WATER	ND WATER	GAS	POWER	TELECOM	NBN	SEWER	STREET TREES
CURLEW WAY (TYPICALLY EAST OF CURRAWONG)		2.3 N	2.8 N	1.8 N	1.3 S	1.8 S	-	-	0.85m N (PART)	2.0m* (BOTH)
CURLEW WAY (TYPICALLY WEST OF CURRAWONG)		2.4 S	-	2.1 S	2.6 N	2.1 N	-	-	-	2.0m* (BOTH)
CURRAWONG CLOSE		2.4 W	1.0 E	2.1 W	APPROX 2.3 E	APPROX 2.0 E	-	-	-	2.0m* (BOTH)

NOTE: - OFFSETS ARE TYPICAL DIMENSIONS FROM ROAD RESERVE BOUNDARIES UNLESS STATED OTHERWISE  
STREET TREES ARE TO BE PLANTED AT A 2.0m OFFSET (TYPICALLY) FROM BOK IN ROAD RESERVES  
UNLESS STATED OTHERWISE ON APPROVED LANDSCAPE PLANS. ALL TREE LOCATIONS ARE  
SUBJECT TO CONFIRMATION BY THE LANDSCAPE ARCHITECT ON SITE AT THE TIME OF PLANTING.

ISSUED FOR  
CONSTRUCTION

© COPYRIGHT All rights reserved.  
Beveridge Williams & Co. Pty Ltd has granted a licence to the principal to use this document for its intended purpose.  
No unauthorised copying is permitted.

Rev	Description	Date	By	App
A	ISSUED FOR CONSTRUCTION	15.10.14	MJC	MJC

Designed Date	M.COYNE 25.08.14
Drawn	M.JONES
Approved Date	C.WHITE 25.08.14
PS Number	PS701111J
BW Ref	M4015-11A

05001

05002

05003

05004

05005

05006

05007

05008

05009

05010

05011

05012

05013

05014

05015

05016

05017

05018

05019

05020

05021

05022

05023

05024

05025

05026

05027

05028

05029

05030

05031

05032

05033

05034

05035

05036

05037

05038

05039

05040

05041

05042

05043

05044

05045

05046

05047

05048

05049

05050

05051

05052

05053

05054

05055

05056

05057

05058

05059

05060

05061

05062

05063

05064

05065

05066

05067

05068

05069

05070

05071

05072

05073

05074

05075

05076

05077

05078

05079

05080

05081

05082

05083

05084

05085

05086

05087

05088

05089

05090

05091

05092

05093

05094

05095

05096

05097

05098

05099

05100

05101

05102

05103

05104

05105

05106

05107

05108

05109

05110

05111

05112

05113

05114

05115

05116

05117

05118

05119

05120

05121

05122

05123

05124

05125

05126

05127

05128

05129

05130

05131

05132

05133

05134

05135

05136

05137

05138

05139

05140

05141

05142

05143

05144

05145

05146

05147

05148

05149

05150

05151

05152

05153

05154

05155

05156

05157

05158

05159

05160

05161

05162

05163

05164

05165

05166

05167

05168

05169

05170

05171

05172

05173

05174

05175

05176

05177

05178

05179

05180

05181

05182

05183

05184

05185

05186

05187

05188

05189

05190

05191

05192

05193

05194

05195

05196

05197

05198

05199

05200

05201

05202

05203

05204

05205

05206

05207

05208

05209

05210

05211

05212

05213

05214

05215

05216

05217

05218

05219

05220

05221

05222

05223

05224

05225

05226

05227

05228

05229

05230

05231

05232

05233

05234

05235

05236

05237

05238

05239

05240

05241

05242

05243

05244

05245

05246

05247

05248

05249

05250

05251

05252

05253

05254

05255

05256

05257

05258

05259

05260

05261

05262

05263

05264

05265

05266

05267

05268

05269

05270

05271

05272

05273

05274

05275

05276

05277

05278

05279

05280

05281

05282

05283

05284

05285

05286

05287

05288

05289

05290

05291

05292

05293

05294

05295

05296

05297

05298

05299

05300

05301

05302

05303

05304

05305

05306

05307

05308

05309

05310

05311

05312

05313

05314

05315

05316

05317

05318

05319

05320

05321

05322

05323

05324

05325

05326

05327

05328

05329

05330

05331

05332

05333

05334

05335

05336

05337

05338

05339

05340

05341

05342

05343

05344

05345

05346

05347

05348

05349

05350

05351

05352

05353

05354

05355

05356

05357

05358

05359

05360

05361

05362

05363

05364

05365

05366

05367

05368

05369

05370

05371

05372

05373

05374

05375

05376

05377

05378

05379

05380

05381

05382

05383

05384

05385

05386

05387

05388

05389

05390

05391

05392

05393

05394

05395

05396

05397

05398

05399

05400

05401

05402

05403

05404

05405

05406

05407

05408

05409

05410

05411

05412

05413

05414

05415

05416

05417

05418

05419

05420

05421

05422

05423

05424

05425

05426

05427

05428

05429

05430

05431

05432

05433

05434

05435

05436

05437

05438

05439

05440

05441

05442

05443

05444

05445

05446

05447

05448

05449

05450

05451

05452

05453

05454

05455

05456

05457

05458

05459

05460

05461

05462

05463

05464

05465

05466

05467

05468

05469

05470

05471

05472

05473

05474

05475

05476

05477

05478

05479

05480

05481

05482

05483

05484

05485

05486

05487

05488

05489

05490

05491

05492

05493

05494

05495

05496

05497

05498

05499

05500

05501

05502

05503

05504

05505

05506

05507

05508

05509

05510

05511

05512

05513

05514

05515

05516

05517

05518

05519

05520

05521

05522

05523

05524

05525

05526

05527

05528

05529

05530

05531

05532

05533

05534

05535

05536

05537

05538

05539

05540

05541

05542

05543

05544

05545

05546

05547

05548

05549

05550

05551

05552

05553

05554

05555

05556

05557

05558

05559

05560

05561

05562

05563

05564

05565

05566

05567

05568

05569

05570

05571

05572

05573

05574

05575

05576

05577

05578

05579

05580

05581

05582

05583

05584

05585

05586

05587

05588

05589

05590

05591

05592

05593

05594

05595

05596

05597

05598

05599

05600

05601

05602

05603

05604

05605

05606

05607

05608

05609

05610

05611

05612

05613

05614

05615

05616

05617

05618

05619

05620

05621

05622

05623

05624

05625

05626

05627

05628

05629

05630

05631

05632

05633

05634

05635

05636

05637

05638

05639

05640

05641

05642

05643

05644

05645

05646

05647

05648

05649

05650

05651

05652

05653

05654

05655

05656

05657

05658

05659

05660

05661

05662

05663

05664

05665

05666

05667

05668

05669

05670

05671

05672

05673

05674

05675

05676

05677

05678

05679

05680

05681

05682

05683

05684

05685

05686

05687

05688

05689

05690

05691

05692

05693

05694

05695

05696

05697

05698

05699

05700

05701

05702

05703

05704

05705

05706

05707

05708

05709

05710

05711

05712

05713

05714

05715

05716

05717

05718

05719

05720

05721

05722

05723

05724

05725

05726

05727

05728

05729

05730

05731

05732

05733

05734

05735

05736

05737

05738

05739

05740

05741

05742

05743

05744

05745

05746

05747

05748

05749

05750

05751

05752

05753

05754

05755

05756

05757

05758

05759

05760

05761

05762

05763

05764

05765

05766

05767

05768

05769

05770

05771

05772

05773

05774

05775

05776

05777

05778

05779

05780

05781

05782

05783

05784

05785

05786

05787

05788

05789

05790

05791

05792

05793

05794

05795

05796

05797

05798

05799

05800

05801

05802

05803

05804

05805

05806

05807

05808

05809

05810

05811

05812

05813

05814

05815

05816

05817

05818

05819

05820

05821

05822

05823

05824

05825

05826

05827

05828

05829

05830

05831

05832

05833

05834

05835

05836

05837

05838

05839

05840

05841

05842

05843

05844

05845

05846

05847

05848

05849

05850

05851

05852

05853

05854

05855

05856

05857

05858

05859

05860

05861

05862

05863

05864

05865

05866

05867

05868

05869

05870

05871

05872

05873

05874

05875

05876

05877

05878

05879

05880

05881

05882

05883

05884

05885

05886

05887

05888

05889

05890

05891

05892

05893

05894

05895

05896

05897

05898

05899

05900

05901

05902

05903

05904

05905

05906

05907

05908

05909

05910

05911

05912

05913

05914

05915

05916

05917

05918

05919

05920

05921

05922

05923

05924

05925

05926

05927

05928

05929

05930

05931

05932

05933

05934

05935

05936

05937

05938

05939

05940

05941

05942

05943

05944

05945

05946

05947

05948

05949

05950

05951

05952

05953

05954

05955

05956

05957

05958

05959

05960

05961

05962

05963

05964

05965

05966

05967

05968

05969

05970

05971

05972

05973

05974

05975

05976

05977

05978

05979

05980

05981

05982

05983

05984

05985

05986

05987

05988

05989

05990

05991

05992

05993

05994

05995

05996

05997

05998

05999

06000

06001

06002

06003

06004

06005

06006

06007

06008

06009

06010

06011

06012

06013

06014

06015

06016

06017

06018

06019

06020

06021

06022

06023

06024

06025

06026

06027

06028

06029

06030

06031

06032

06033

06034

06035

06036

06037

06038

06039

06040

06041

06042

06043

06044

06045

06046

06047

06048

06049

06050

06051

06052

06053

06054

06055

06056

06057

06058

06059

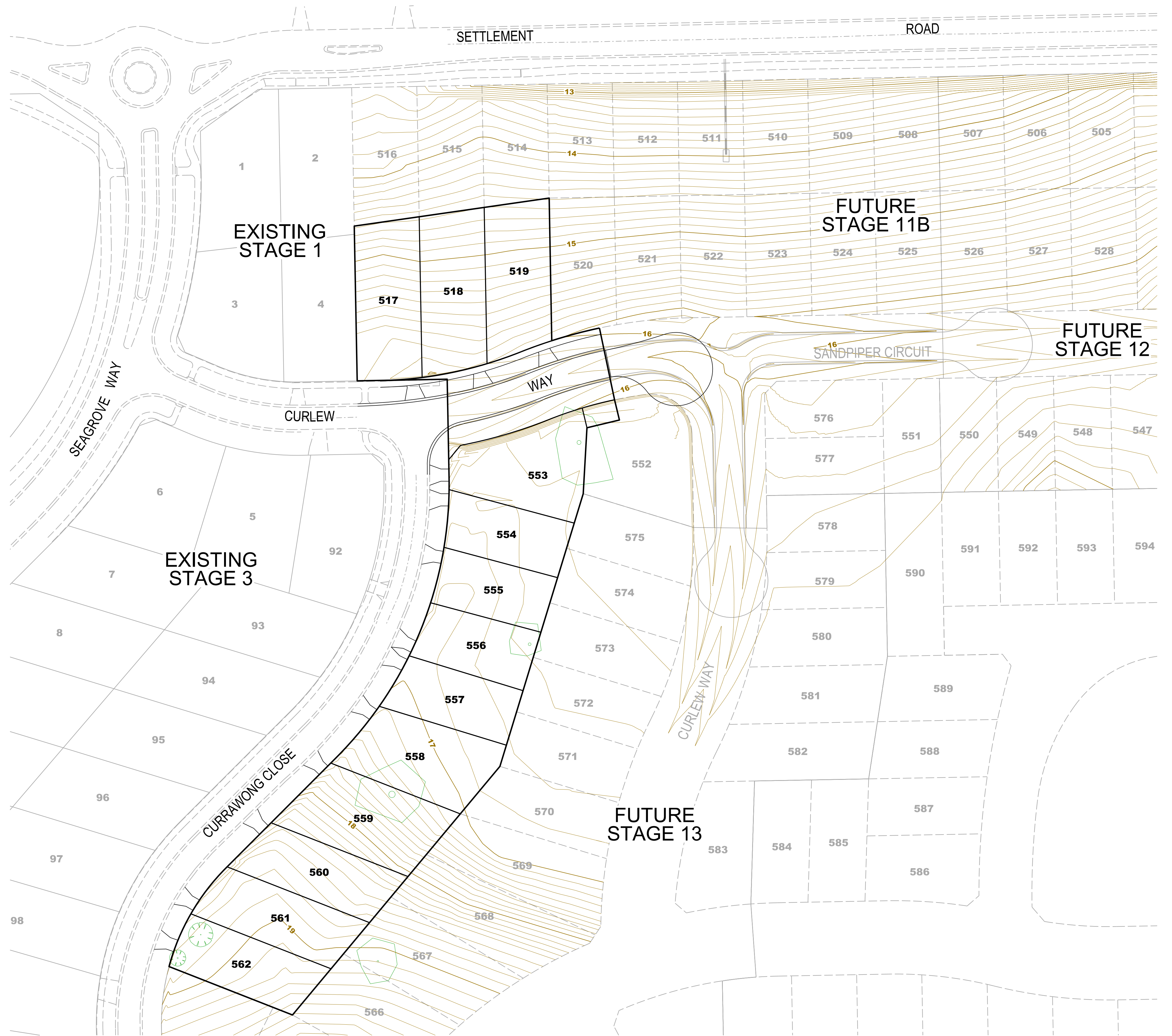
06060

06061

06062

<





**LEGEND**

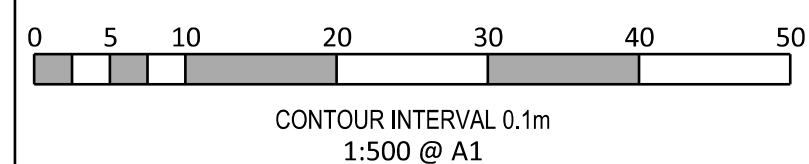
VEGETATION TO RETAIN

TREE TO RETAIN

VEHICLE CROSSOVER

**ISSUED FOR CONSTRUCTION**

© COPYRIGHT All rights reserved. Beveridge Williams & Co. Pty Ltd has granted a licence to the principal to use this document for its intended purpose. No unauthorised copying is permitted.																							
A ISSUED FOR CONSTRUCTION			15.10.14 MJC MJC																				
Rev	Description		Date	By	App	Rev	Description		Date	By	App	Rev	Description		Date	By	App	Rev	Description		Date	By	App



Designed  
Date

Drawn  
Date

Approved  
Date

PS Number

BW Ref

M.COYNE  
25.08.14

M.JONES  
25.08.14

C.WHITE  
25.08.14

PS701111J

M4015-11A

**BW** Beveridge Williams  
development & environment consultants  
134 Graham Street  
Wonthaggi VIC 3995  
ph: 03 5672 1505  
www.beveridgewilliams.com.au

Project  
Details

Drawing  
Title

SEAGROVE ESTATE STAGE 11A, COWES  
SOUTHERN SUSTAINABLE DEVELOPMENTS  
BASS COAST SHIRE COUNCIL

FINISHED CONTOUR PLAN

Scale  
1:500 @ A1

Council Ref  
2448

Stage No  
11A

Drawing No  
R 202

Rev  
A





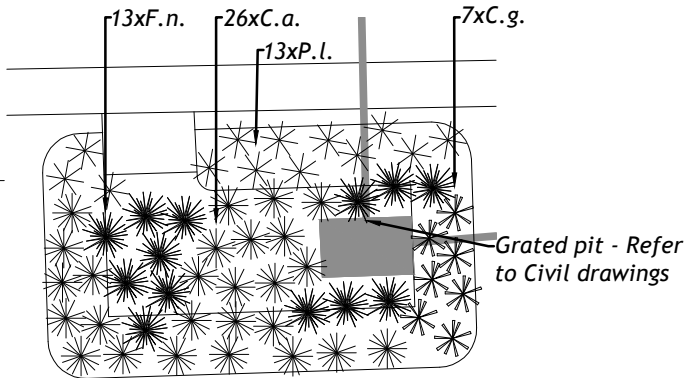
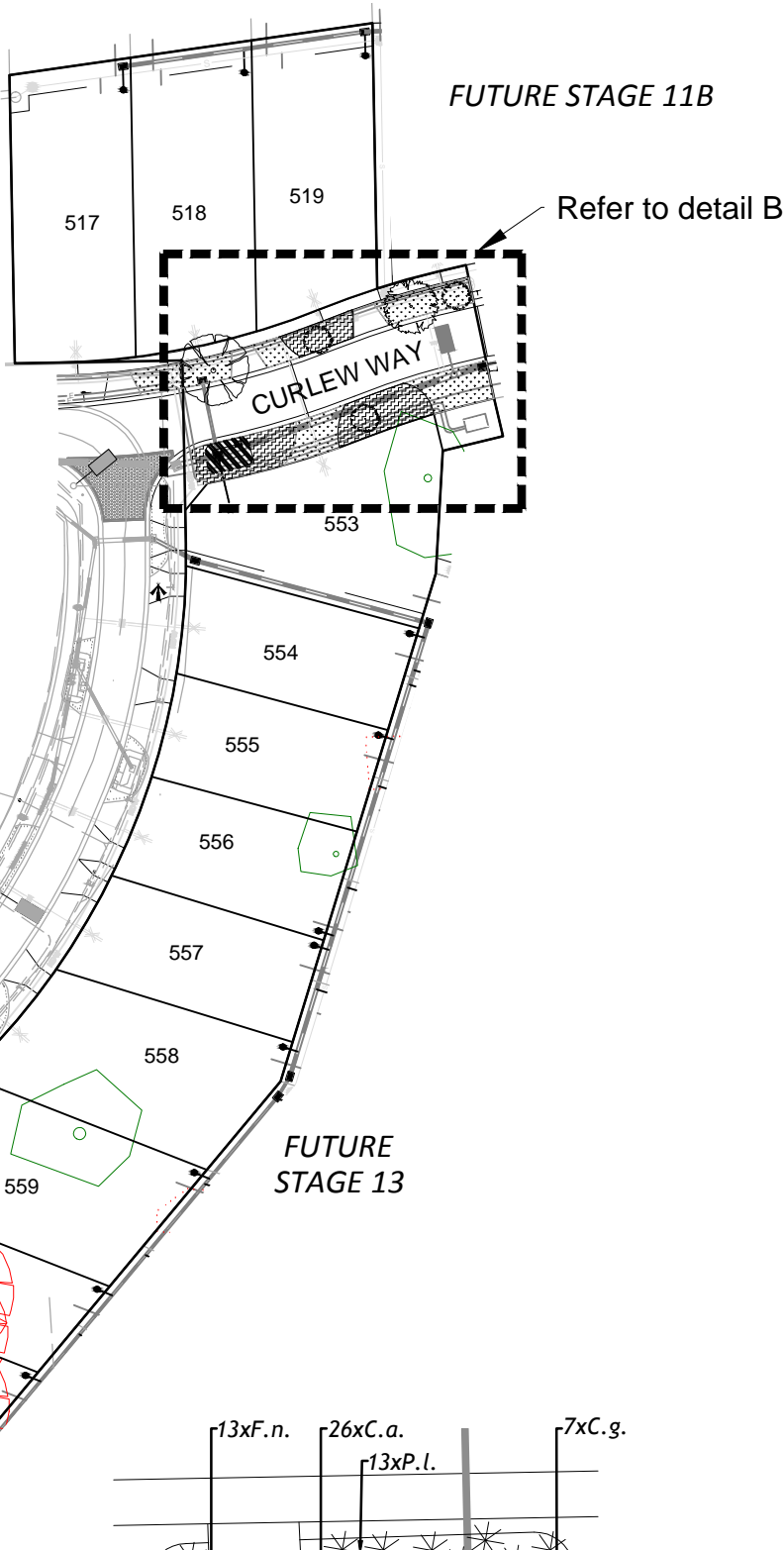
KEY PLAN (NOT TO SCALE)

EXISTING STAGE 3  
Currawong Close planting  
completed as part of stage 3

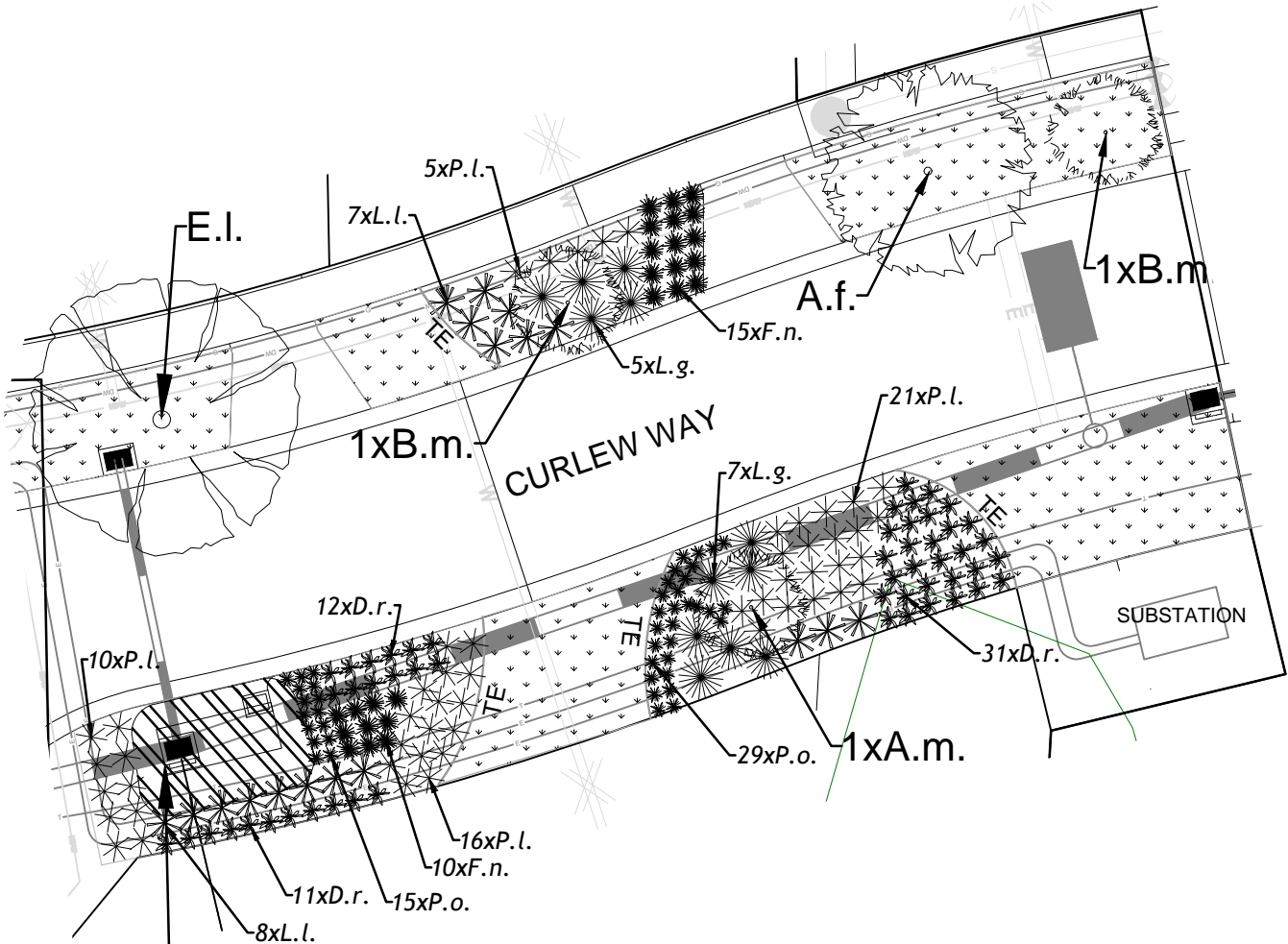
A STAGE 11a Plan  
SCALE 1:500



FOR COUNCIL APPROVAL



C TYPICAL RAINGARDEN PLANTING DETAIL  
SCALE 1:10 (A3) / 1:20(A1)



RAINGARDEN

Refer to typical raingarden planting  
Sheet 1, Detail C

B 1 DETAIL PLANTING PLAN  
SCALE 1:50 (A3) / 1:100(A1)

GENERAL NOTES

1. Refer to Landscape Specification by Beveridge Williams.
2. The Landscape Contractor must refer to civil engineering drawings for set out of roads and carpark and all infrastructure.
3. This plan is intended for soft landscaping and associated landscape materials and must not be used for any other purposes.
4. All survey information supplied is assumed to be correct.
5. The Landscape Contractor must verify all dimensions and areas prior to commencing any work or placing any orders for materials.
6. The Landscape Contractor must determine the location of all underground services prior to commencing any work on site and shall be liable for any damage to services or conduits.
7. The Landscape Contractor must immediately report any perceived errors or omissions in the landscape drawings to the Project Manager and Client.
8. Where any conflict occurs between proposed tree locations and infrastructure, such as light poles or powerlines, tree(s) must be relocated or removed.
9. The Landscape Contractor must confirm all plant quantities prior to ordering.
10. Grassed nature strips as specified.
11. Refer to Sheet 2 - LANDSCAPE DETAILS - for Establishment & Maintenance Notes

LEGEND

- EXISTING TREE TO BE RETAINED & PROTECTED
- EXISTING TREE TO BE REMOVED
- PROPOSED TREES & SHRUBS
- TERRESTRIAL PLANTING (SHREDDED EUCAMULCH)
- RAINGARDEN PLANTING IN 'TARRAWINGEE PEBBLES' GRAVEL MULCH (Ephemeral zone) Refer Detail A, Sheet 1
- GRASS (SEEDED)
- DRAINAGE
- SERVICES
- ELECTRICITY / STREET LIGHTS
- TIMBER EDGE Refer Detail C, Sheet 2

PLANT SCHEDULE						
CODE	BOTANICAL NAME	COMMON NAME	HEIGHT X WIDTH	% MIX & DENSITY	POT SIZE	QTY
Street Trees						
A.f.	Agonis flexuosa	Willow Myrtle	7-9x4-5m	-	400mm	1
A.m.	Acacia melanoxylon	Blackwood	12-16x5-7m	-	45L	1
B.m.	Banksia marginata	Sliver Banksia	2x1.8m	-	400mm	2
E.I.	Eucalyptus leucoxylon 'Eukie Dwarf'	Dwarf Yellow Gum	9-10x7-9m	-	400mm	1
Terrestrial Planting (Street planting) - Tussocks & groundcovers						
D.r.	Dianella revoluta var brevicaulis	Black-anther Flax Lily	0.8x0.8m	-	Tube	54
F.n.	Ficinia nodosa	Knobby Club-Rush	1x0.8m	-	Tube	25
L.g.	Lepidosperma gladiatum	Coast Sword Sedge	1x1.5m	-	Tube	12
P.o.	Patersonia occidentalis	Purple Flag	0.3x0.5m	-	Tube	44
P.l.	Poa labillardieri	Common Tussock Grass	1x1m	-	Tube	52
L.l.	Lomandra Tanika	Spiny Headed Mat Rush	1x1.2m	-	Tube	15
Ephemeral Raingarden						
C.a.	Carex appressa	Tall Sedge	0.8X0.7m	22% @ 4/m²	Tube	26
C.g.	Carex gaudichaudiana	Fen Sedge	0.8X0.5m	22% @ 4/m²	Tube	7
F.n.	Ficinia nodosa	Nobby Club Rush	1x0.8m	44% @ 4/m²	Tube	13
P.l.	Poa labillardieri	Common Tussock - Grass	0.8X0.8m	12% @ 4/m²	Tube	13