

**LEGEND - LAYOUT PLAN**

- STORMWATER DRAIN, PIT & PROPERTY INLET
- MELBOURNE WATER DRAIN & PIT
- SWALE DRAIN
- SEWER & MAINTENANCE STRUCTURES
- HOUSE DRAIN
- SERVICE CONDUITS
- TACTILE PAVERS (INDICATIVE ONLY)
- ELECTRICITY (UNDERGROUND)
- ELECTRICITY (OVERHEAD)
- OPTIC FIBRE
- TELECOMMUNICATIONS
- GAS
- WATER
- RECYCLED WATER
- EXISTING ELECTRICITY (UNDERGROUND)
- EXISTING ELECTRICITY (OVERHEAD)
- EXISTING GAS
- EXISTING OPTIC FIBRE
- EXISTING TELECOMMUNICATIONS
- EXISTING WATER
- EXISTING RECYCLED WATER
- EXISTING STORMWATER DRAIN
- EXISTING SEWER
- EXISTING HOUSE DRAIN
- EXISTING SURFACE LEVEL
- FINISHED BUILDING LINE LEVEL
- FINISHED RIDGE LINE LEVEL
- TOP OF RETAINING WALL
- BOTTOM OF RETAINING WALL
- RIDGE LINE
- RETAINING WALL
- ZERO LOT LINES
- PAVEMENT TREATMENT
- STRUCTURAL FILL > 200mm DEEP
- DIRECTION OF FALL
- OVERLAND FLOW
- ALLOTMENT TO BE GRADED EVENLY IN DIRECTION OF FALL TO LEVELS INDICATED
- CONCRETE EDGE STRIP WITH SUBSOIL DRAIN, "NO ROAD" SIGN & BARRIER
- LIMIT OF WORKS
- EXISTING TREE TO BE REMOVED
- EXISTING TREE TO BE RETAINED
- PERMANENT SURVEY MARK
- TEMPORARY BENCH MARK
- PROPOSED DRIVEWAY
- NDW/DW FIRE HYDRANT
- TREE PROTECTION ZONE

NOTE: DRIVEWAYS TO BE CONSTRUCTED FOR LOTS 586, 590, 592-594, 596, 597, 599-601, 604, 605, 607, 609. DRIVEWAYS FOR LOTS NOT LISTED ARE TO BE COMPLETED AT TIME OF OCCUPANCY IN ACCORDANCE WITH TITLE RESTRICTIONS.

NOTE: ALL EXISTING VEGETATION MUST BE MAINTAINED WHERE POSSIBLE UNLESS SPECIFIED OTHERWISE IN THE CONSTRUCTION MANAGEMENT PLAN

NOTE: AREAS OF FILLING WORKS WITHIN LOTS ARE TO BE SURVEYED ONCE COMPLETED AND FINISHED LEVELS TO BE SHOWN ON AS CONSTRUCTED PLANS

NOTE: UNLESS SHOWN OTHERWISE ALL AREAS SHOWN ON THE DRAWINGS TO BE CUT OR FILLED ARE TO BE STRIPPED OF TOPSOIL TO A DEPTH OF 75mm. UPON COMPLETION OF THE BULK EARTHWORKS, THE TOPSOIL IS TO BE SPREAD TO A DEPTH OF 75mm OVER THE AREA & GRADED TO FINISHED LEVELS SHOWN ON THE DRAWINGS WITH A MINIMUM SLOPE OF 1 IN 200. ALL FILLING IS TO BE COMPACTED IN 150mm EQUAL LAYERS TO 95% OF AS 1289.5.1.1 (STANDARD COMPACTION) & TEST RESULTS FORWARDED TO COUNCIL. REFER TO CUT AND FILL DETAIL ON SHEET 012 FOR AREAS OF FILL WORKS.

NOTE: SERVICES TO BE BORED WITHIN ROOT PROTECTION ZONES OF TREES BEING RETAINED.

ROAD LAYOUT TABLE

Road Name	Road Classification	Reserve Width (m)	Road Width (m)			Kerb Type		Verge Width (m)	
			Lip to Lip	Inv to Inv	Back to Back	Nth/West	Sth/East	Nth/West	Sth/East
BRONZEWING DRIVE	ACCESS	VARIES	VARIES	VARIES	VARIES	MOD SM2	MOD SM2	VARIES	VARIES
SANDPIPER CIRCUIT	ACCESS	VARIES	VARIES	VARIES	VARIES	VARIES	MOD SM2	VARIES	VARIES
GAHNIA GROVE	ACCESS	16.00	6.7	0.00	7.90	MOD SM2	MOD SM2	2.45	4.05
TURNSTONE PLACE	SHARED DRIVEWAY	12.00	-	-	5.5	-	-	0.10	2.70
CUTTLEFISH PLACE	SHARED DRIVEWAY	12.00	-	-	5.5	-	-	3.25	3.25

SERVICES OFFSET TABLE

ROAD NAME	GAS		WATER		RECYCLED WATER		ELECTRICITY		TELECOMMUNICATION		TREES	
	SIDE	OFFSET (m)	SIDE	OFFSET (m)	SIDE	OFFSET (m)	SIDE	OFFSET (m)	SIDE	OFFSET (m)	SIDE	OFFSET (m)
SANDPIPER CIRCUIT	WEST	VARIES	WEST	VARIES	WEST	VARIES	EAST	VARIES	EAST	VARIES	BOTH	VARIES
BRONZEWING DRIVE	NORTH	0.8	NORTH	1.4	NORTH	2	SOUTH	2.7	SOUTH	2.1	BOTH	VARIES
GAHNIA GROVE	EAST	2.1	EAST	2.5	EAST	2.9	WEST	1.8	WEST	1.3	BOTH	3.05
CUTTLEFISH PLACE	NORTH	1.1	NORTH	1.7	NORTH	2.3	SOUTH	1.7	SOUTH	1.1	NORTH	2.25
TURNSTONE PLACE	EAST	1.7	EAST	2.1	EAST	2.5	WEST	1.7	WEST	1.1	EAST	3.30

NOTE: - TREE PLANTING IS GENERALLY 1m (APPROX) OFFSET FROM BoK IN ROAD RESERVES, BUT ALL LOCATIONS ARE SUBJECT TO CONFIRMATION BY THE LANDSCAPE ARCHITECT ON SITE AT THE TIME OF PLANTING

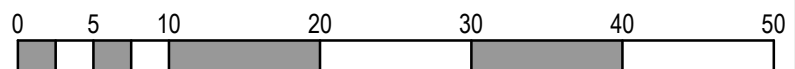
**WARNING**  
**BEWARE OF UNDERGROUND SERVICES**  
The locations of underground services are approximate only and their exact position should be proven on site.  
No guarantee is given that all existing services are shown.  
Locate all underground services before commencement of works  
**DIAL 1100 BEFORE YOU DIG**  
www.1100.com.au

**ISSUED FOR CONSTRUCTION**

© COPYRIGHT All rights reserved  
Beveridge Williams & Co. Pty Ltd has granted a licence to the principle to use this document for its intended purpose.  
No unauthorised copying is permitted

E	AMENDED ISSUE	27.02.18	JC	MC
D	AMENDED ISSUE	21.12.17	JC	MC
C	AMENDED ISSUE	10.10.17	JC	MC
B	AMENDED ISSUE	20.09.17	JC	MC
A	ISSUED FOR CONSTRUCTION	12.09.2017	JC	MC

REV	DESCRIPTION	DATE	DRN	APP	REV	DESCRIPTION	DATE	DRN	APP



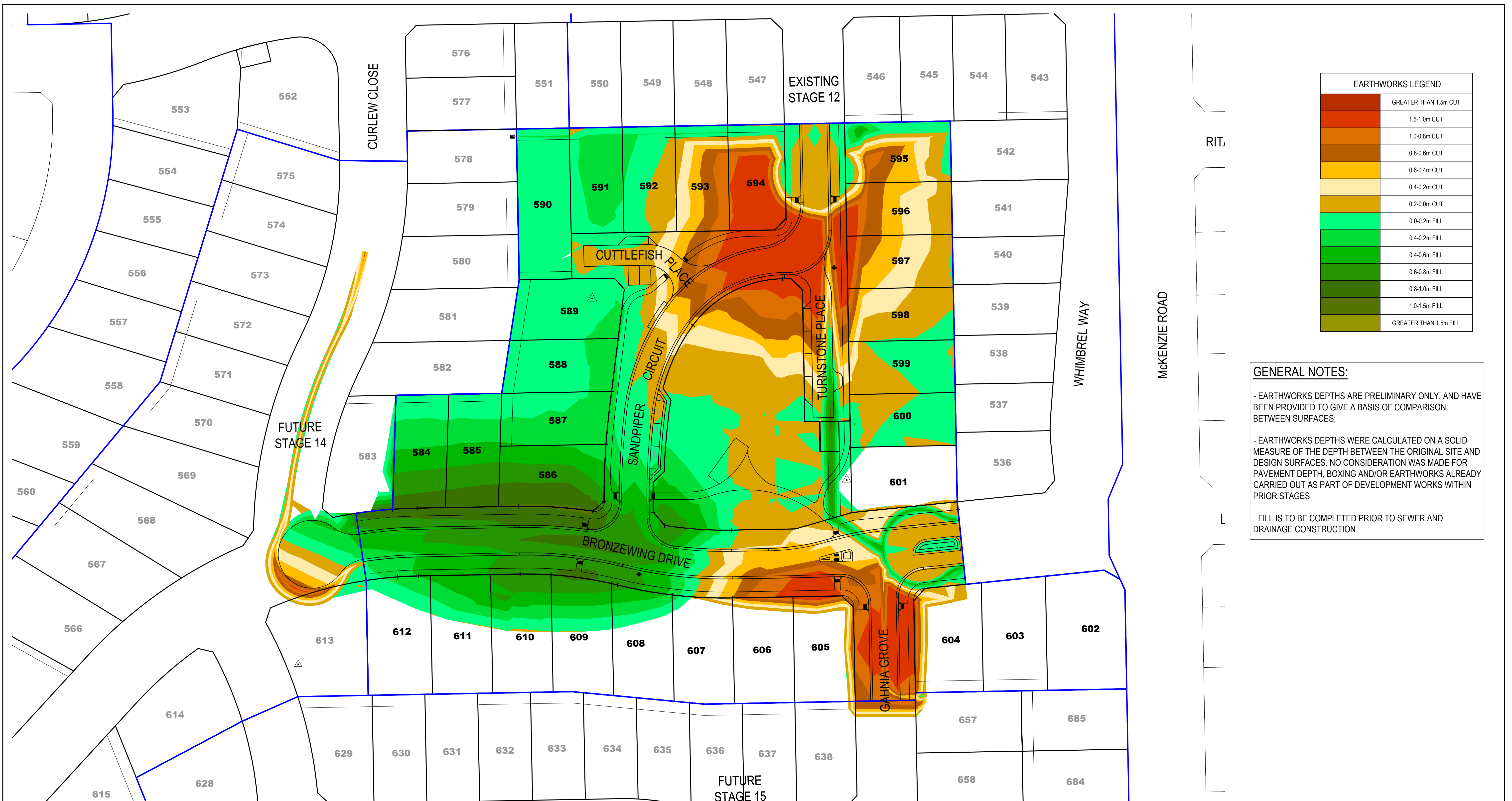
Designed	J CLOTTU
Date	16.06.2017
Drawn	J CLOTTU
Approved	M COYNE
Date	16.06.2017
PS Number	PS808680V

**BW** Beveridge Williams  
development & environment consultants  
134 Graham St  
Wonthaggi VIC 3996  
ph: 03 5672 1505  
www.beveridgewilliams.com.au

Project Details  
SEAGROVE ESTATE STAGE 13  
SOUTHERN SUSTAINABLE DEVELOPMENTS  
BASS COAST SHIRE COUNCIL  
Drawing Title  
LAYOUT PLAN

Sheet 05 of 35		Scale 1:500 @ A1	Project Ref 2778	Stage No 13	Drawing No 010	Rev E





EARTHWORKS LEGEND	
	GREATER THAN 1.5m CUT
	1.5-1.0m CUT
	1.0-0.8m CUT
	0.8-0.6m CUT
	0.6-0.4m CUT
	0.4-0.2m CUT
	0.2-0.0m CUT
	0.0-0.2m FILL
	0.4-0.2m FILL
	0.4-0.6m FILL
	0.6-0.8m FILL
	0.8-1.0m FILL
	1.0-1.5m FILL
	GREATER THAN 1.5m FILL

## GENERAL NOTES:

- EARTHWORKS DEPTHS ARE PRELIMINARY ONLY, AND HAVE BEEN PROVIDED TO GIVE A BASIS OF COMPARISON BETWEEN SURFACES;

- EARTHWORKS DEPTHS WERE CALCULATED ON A SOLID MEASURE OF THE DEPTH BETWEEN THE ORIGINAL SITE AND DESIGN SURFACES. NO CONSIDERATION WAS MADE FOR PAVEMENT DEPTH, BOXING AND/OR EARTHWORKS ALREADY CARRIED OUT AS PART OF DEVELOPMENT WORKS WITHIN PRIOR STAGES

- FILL IS TO BE COMPLETED PRIOR TO SEWER AND DRAINAGE CONSTRUCTION

## WARNING

## BEWARE OF UNDERGROUND SERVICES

The locations of underground services are approximate only and their exact position should be proven on site.

No guarantee is given that all existing services are shown.

**DIAL 1100 BEFORE YOU DIG**

[www.1100.com.au](http://www.1100.com.au)

ISSUED  
FOR CONSTRUCTION

Sheet 07 of 35

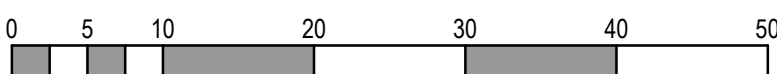
Scale  
1:500 @ A1

Project Ref	Stage No	Drawing No	Rev
2778	13	012	E

© COPYRIGHT All rights reserved  
Beveridge Williams & Co. Pty Ltd has granted a licence to the principle to use this document for its intended purpose  
No unauthorised copying is permitted

E	AMENDED ISSUE	27.02.18	JC	MC
D	AMENDED ISSUE	21.12.17	JC	MC
C	AMENDED ISSUE	10.10.17	JC	MC
B	AMENDED ISSUE	20.09.17	JC	MC
A	ISSUED FOR CONSTRUCTION	12.09.2017	JC	MC

REV	DESCRIPTION	DATE	DRN.	APP.	REV	DESCRIPTION	DATE	DRN.	APP.
-----	-------------	------	------	------	-----	-------------	------	------	------



Designed	J CLOTTU
Date	16.06.2017
Drawn	J CLOTTU
Approved	M COYNE
Date	16.06.2017
PS Number	PS808680V



**Beveridge Williams**  
development & environment consultants

134 Graham St  
Wonthaggi VIC 3996  
ph: 03 5672 1505  
[www.beveridgewilliams.com.au](http://www.beveridgewilliams.com.au)

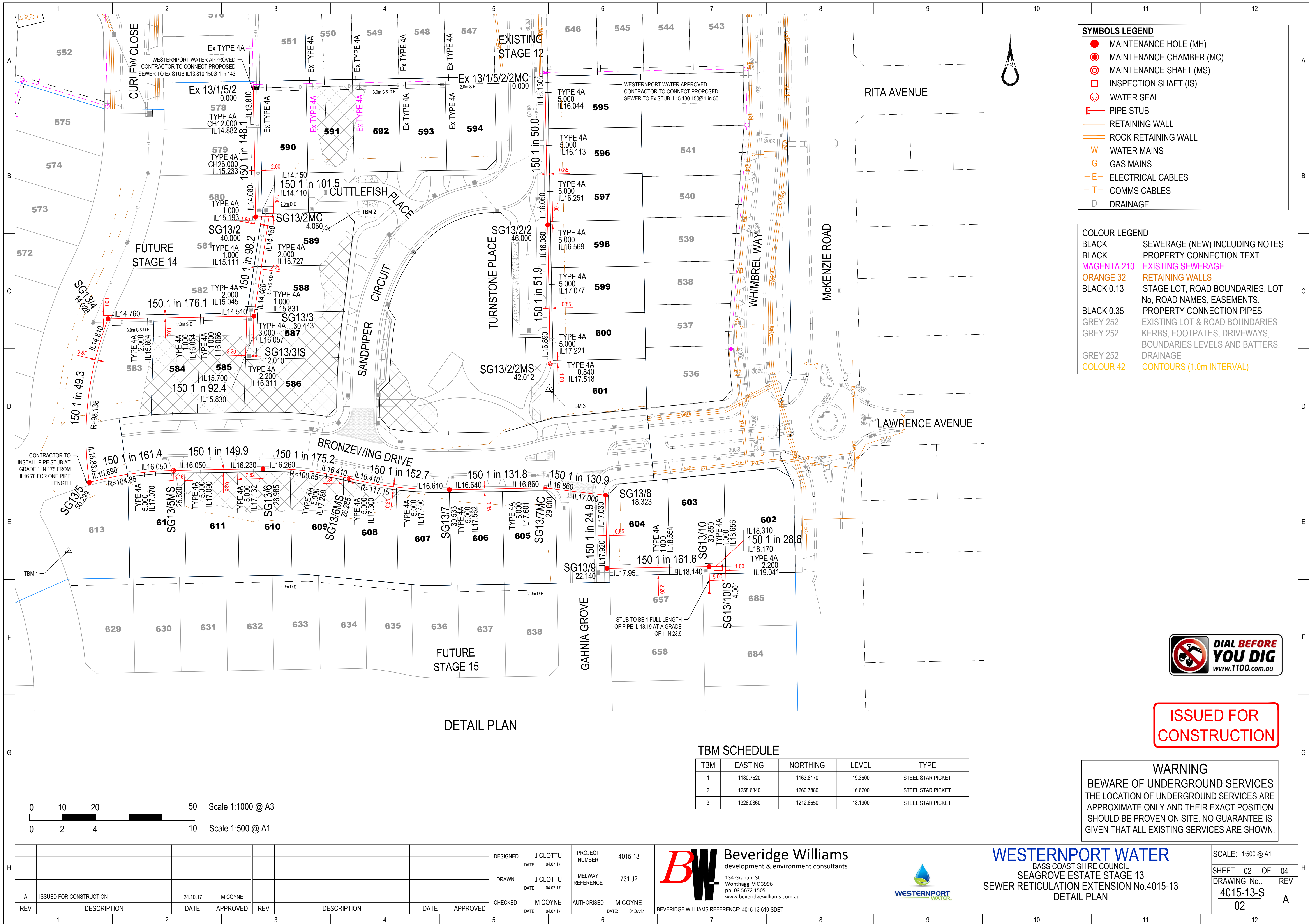
### Project Details

SEAGROVE ESTATE STAGE 13  
SOUTHERN SUSTAINABLE DEVELOPMENTS  
BASS COAST SHIRE COUNCIL

Drawing  
Title

### CUT AND FILL PLAN





**SYMBOLS LEGEND**

- MAINTENANCE HOLE (MH)
- ⊙ MAINTENANCE CHAMBER (MC)
- ⊙ MAINTENANCE SHAFT (MS)
- INSPECTION SHAFT (IS)
- ⊙ WATER SEAL
- PIPE STUB
- RETAINING WALL
- ROCK RETAINING WALL
- W— WATER MAINS
- G— GAS MAINS
- E— ELECTRICAL CABLES
- T— COMMS CABLES
- D— DRAINAGE

**COLOUR LEGEND**

BLACK	SEWERAGE (NEW) INCLUDING NOTES
BLACK	PROPERTY CONNECTION TEXT
MAGENTA 210	EXISTING SEWERAGE
ORANGE 32	RETAINING WALLS
BLACK 0.13	STAGE LOT, ROAD BOUNDARIES, LOT No, ROAD NAMES, EASEMENTS.
BLACK 0.35	PROPERTY CONNECTION PIPES
GREY 252	EXISTING LOT & ROAD BOUNDARIES
GREY 252	KERBS, FOOTPATHS, DRIVEWAYS, BOUNDARIES LEVELS AND BATTERS.
GREY 252	DRAINAGE
COLOUR 42	CONTOURS (1.0m INTERVAL)



**ISSUED FOR CONSTRUCTION**

TBM SCHEDULE

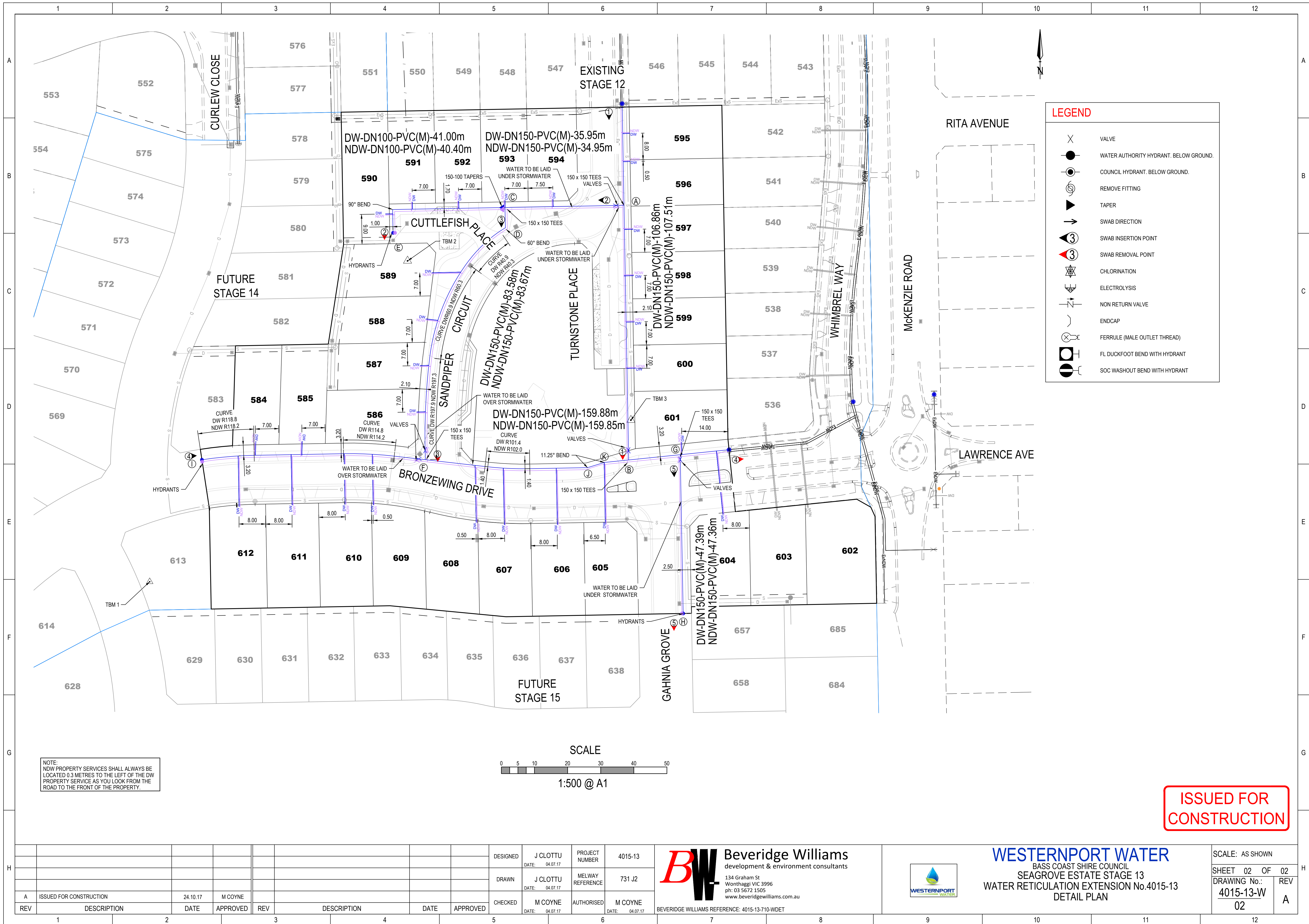
TBM	EASTING	NORTHING	LEVEL	TYPE
1	1180.7520	1163.8170	19.3600	STEEL STAR PICKET
2	1258.6340	1260.7880	16.6700	STEEL STAR PICKET
3	1326.0860	1212.6650	18.1900	STEEL STAR PICKET

**WARNING**  
BEWARE OF UNDERGROUND SERVICES  
THE LOCATION OF UNDERGROUND SERVICES ARE APPROXIMATE ONLY AND THEIR EXACT POSITION SHOULD BE PROVEN ON SITE. NO GUARANTEE IS GIVEN THAT ALL EXISTING SERVICES ARE SHOWN.



--	--	--	--	--	--	--	--	--	--	--	--	--	--	--	--	--	--	--	--	--	--	--	--	--	--	--	--	--	--	--	--	--	--	--	--	--	--	--	--	--	--	--	--	--	--	--	--	--	--	--	--	--	--	--	--	--	--	--	--	--	--	--	--	--	--	--	--	--	--	--	--	--	--	--	--	--	--	--	--	--	--	--	--	--	--	--	--	--	--	--	--	--	--	--	--	--	--	--	--	--	--	--	--	--	--	--	--	--	--	--	--	--	--	--	--	--	--	--	--	--	--	--	--	--	--	--	--	--	--	--	--	--	--	--	--	--	--	--	--	--	--	--	--	--	--	--	--	--	--	--	--	--	--	--	--	--	--	--	--	--	--	--	--	--	--	--	--	--	--	--	--	--	--	--	--	--	--	--	--	--	--	--	--	--	--	--	--	--	--	--	--	--	--	--	--	--	--	--	--	--	--	--	--	--	--	--	--	--	--	--	--	--	--	--	--	--	--	--	--	--	--	--	--	--	--	--	--	--	--	--	--	--	--	--	--	--	--	--	--	--	--	--	--	--	--	--	--	--	--	--	--	--	--	--	--	--	--	--	--	--	--	--	--	--	--	--	--	--	--	--	--	--	--	--	--	--	--	--	--	--	--	--	--	--	--	--	--	--	--	--	--	--	--	--	--	--	--	--	--	--	--	--	--	--	--	--	--	--	--	--	--	--	--	--	--	--	--	--	--	--	--	--	--	--	--	--	--	--	--	--	--	--	--	--	--	--	--	--	--	--	--	--	--	--	--	--	--	--	--	--	--	--	--	--	--	--	--	--	--	--	--	--	--	--	--	--	--	--	--	--	--	--	--	--	--	--	--	--	--	--	--	--	--	--	--	--	--	--	--	--	--	--	--	--	--	--	--	--	--	--	--	--	--	--	--	--	--	--	--	--	--	--	--	--	--	--	--	--	--	--	--	--	--	--	--	--	--	--	--	--	--	--	--	--	--	--	--	--	--	--	--	--	--	--	--	--	--	--	--	--	--	--	--	--	--	--	--	--	--	--	--	--	--	--	--	--	--	--	--	--	--	--	--	--	--	--	--	--	--	--	--	--	--	--	--	--	--	--	--	--	--	--	--	--	--	--	--	--	--	--	--	--	--	--	--	--	--	--	--	--	--	--	--	--	--	--	--	--	--	--	--	--	--	--	--	--	--	--	--	--	--	--	--	--	--	--	--	--	--	--	--	--	--	--	--	--	--	--	--	--	--	--	--	--	--	--	--	--	--	--	--	--	--	--	--	--	--	--	--	--	--	--	--	--	--	--	--	--	--	--	--	--	--	--	--	--	--	--	--	--	--	--	--	--	--	--	--	--	--	--	--	--	--	--	--	--	--	--	--	--	--	--	--	--	--	--	--	--	--	--	--	--	--	--	--	--	--	--	--	--	--	--	--	--	--	--	--	--	--	--	--	--	--	--	--	--	--	--	--	--	--	--	--	--	--	--	--	--	--	--	--	--	--	--	--	--	--	--	--	--	--	--	--	--	--	--	--	--	--	--	--	--	--	--	--	--	--	--	--	--	--	--	--	--	--	--	--	--	--	--	--	--	--	--	--	--	--	--	--	--	--	--	--	--	--	--	--	--	--	--	--	--	--	--	--	--	--	--	--	--	--	--	--	--	--	--	--	--	--	--	--	--	--	--	--	--	--	--	--	--	--	--	--	--	--	--	--	--	--	--	--	--	--	--	--	--	--	--	--	--	--	--	--	--	--	--	--	--	--	--	--	--	--	--	--	--	--	--	--	--	--	--	--	--	--	--	--	--	--	--	--	--	--	--	--	--	--	--	--	--	--	--	--	--	--	--	--	--	--	--	--	--	--	--	--	--	--	--	--	--	--	--	--	--	--	--	--	--	--	--	--	--	--	--	--	--	--	--	--	--	--	--	--	--	--	--	--	--	--	--	--	--	--	--	--	--	--	--	--	--	--	--	--	--	--	--	--	--	--	--	--	--	--	--	--	--	--	--	--	--	--	--	--	--	--	--	--	--	--	--	--	--	--	--	--	--	--	--	--	--	--	--	--	--	--	--	--	--	--	--	--	--	--	--	--	--	--	--	--	--	--	--	--	--	--	--	--	--	--	--	--	--	--	--	--	--	--	--	--	--	--	--	--	--	--	--	--	--	--	--	--	--	--	--	--	--	--	--	--	--	--	--	--	--	--	--	--	--	--	--	--	--	--	--	--	--	--	--	--	--	--	--	--	--	--	--	--	--	--	--	--	--	--	--	--	--	--	--	--	--	--	--	--	--	--	--	--	--	--	--	--	--	--	--	--	--	--	--	--	--	--	--	--	--	--	--	--	--	--	--	--	--	--	--	--	--	--	--	--	--	--	--	--	--	--	--	--	--	--	--	--	--	--	--	--	--	--	--	--	--	--	--	--	--	--	--	--	--	--	--	--	--	--	--	--	--	--	--	--	--	--	--	--	--	--	--	--	--	--	--	--	--	--	--	--	--	--	--	--	--	--	--	--	--	--	--	--	--	--	--	--	--	--	--	--	--	--	--	--	--	--	--	--	--	--	--	--	--	--	--	--	--	--	--	--	--	--	--	--	--	--	--	--	--	--	--	--	--	--	--	--	--	--	--	--	--	--	--	--	--	--	--	--	--	--	--	--	--	--	--	--	--	--	--	--	--	--	--	--	--	--	--	--	--	--	--	--	--	--	--	--	--	--	--	--	--	--	--	--	--	--	--	--	--	--	--	--	--	--	--	--	--	--	--	--	--	--	--	--	--	--	--	--	--	--	--	--	--	--	--	--	--	--	--	--	--	--	--	--	--	--	--	--	--	--	--	--	--	--	--	--	--	--	--	--	--	--	--	--	--	--	--	--	--	--	--	--	--	--	--	--	--	--	--	--	--	--	--	--	--	--	--	--	--	--	--	--	--	--	--	--	--	--	--	--	--	--	--	--	--	--	--	--	--	--	--	--	--	--	--	--	--	--	--	--	--	--	--	--	--	--	--	--	--	--	--	--	--	--	--	--	--	--	--	--	--	--	--	--	--	--	--	--	--	--	--	--	--	--	--	--	--	--	--	--	--	--	--	--	--	--	--	--	--	--	--	--	--	--	--	--	--	--	--	--	--	--	--	--	--	--	--	--	--	--	--	--	--	--	--	--	--	--	--	--	--	--	--	--	--	--	--	--	--	--	--	--	--	--	--	--	--	--	--	--	--	--	--	--	--	--	--	--	--	--	--	--	--	--	--	--	--	--	--	--	--	--	--	--	--	--	--	--	--	--	--	--	--	--	--	--	--	--	--	--	--	--	--	--	--	--	--	--	--	--	--	--	--	--	--	--	--	--	--	--	--	--	--	--	--	--	--	--	--	--	--	--	--	--	--	--	--	--	--	--	--	--	--	--	--	--	--	--	--	--	--	--	--	--	--	--	--	--	--	--	--	--	--	--	--	--	--	--	--	--	--	--	--	--	--	--





ISSUED FOR  
CONSTRUCTION

						DESIGNED			J CLOTTU DATE: 04.07.17		PROJECT NUMBER		4015-13		<div><div><div>BW</div></div><div>Beveridge Williams development &amp; environment consultants 134 Graham St Wonthaggi VIC 3996 ph: 03 5672 1505 www.beveridgewilliams.com.au</div><div>BEVERIDGE WILLIAMS REFERENCE: 4015-13-710-WDET</div></div>		<div><div><div>WESTERNPORT WATER</div></div><div>WESTERNPORT WATER BASS COAST SHIRE COUNCIL SEAGROVE ESTATE STAGE 13 WATER RETICULATION EXTENSION No.4015-13 DETAIL PLAN</div></div>		SCALE: AS SHOWN								
			DRAWN			J CLOTTU DATE: 04.07.17		MELWAY REFERENCE		731 J2		SHEET 02 OF 02															
A			ISSUED FOR CONSTRUCTION			24.10.17			M COYNE			DRAWING No.: 4015-13-W		REV A													
REV		DESCRIPTION				DATE		APPROVED		REV		DESCRIPTION				DATE		APPROVED		CHECKED		M COYNE DATE: 04.07.17		AUTHORISED		M COYNE	

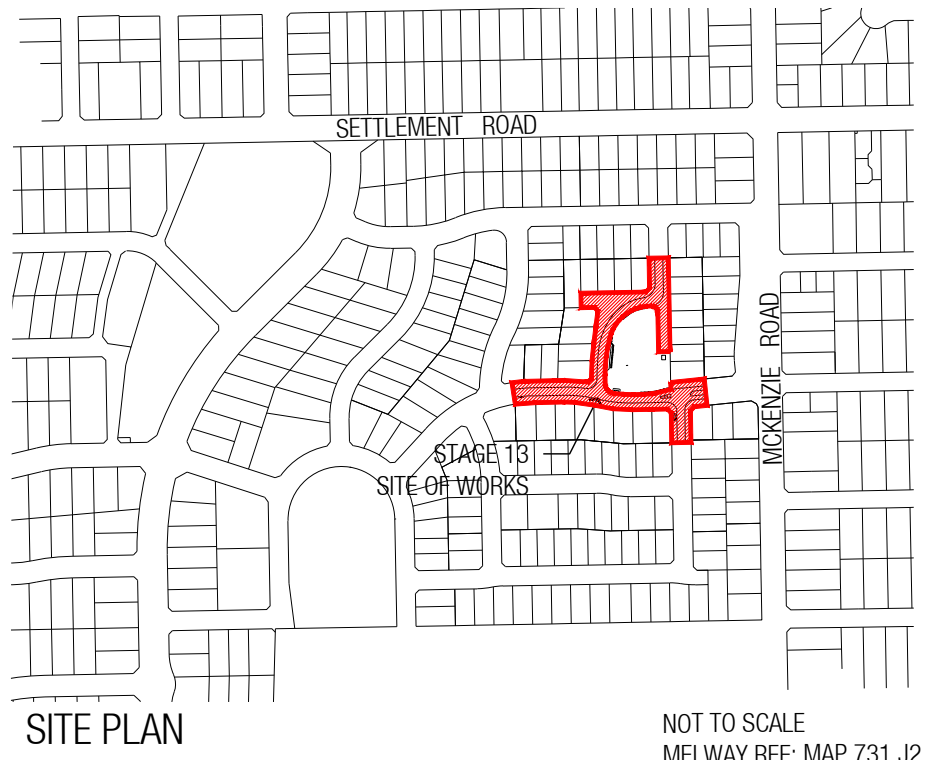
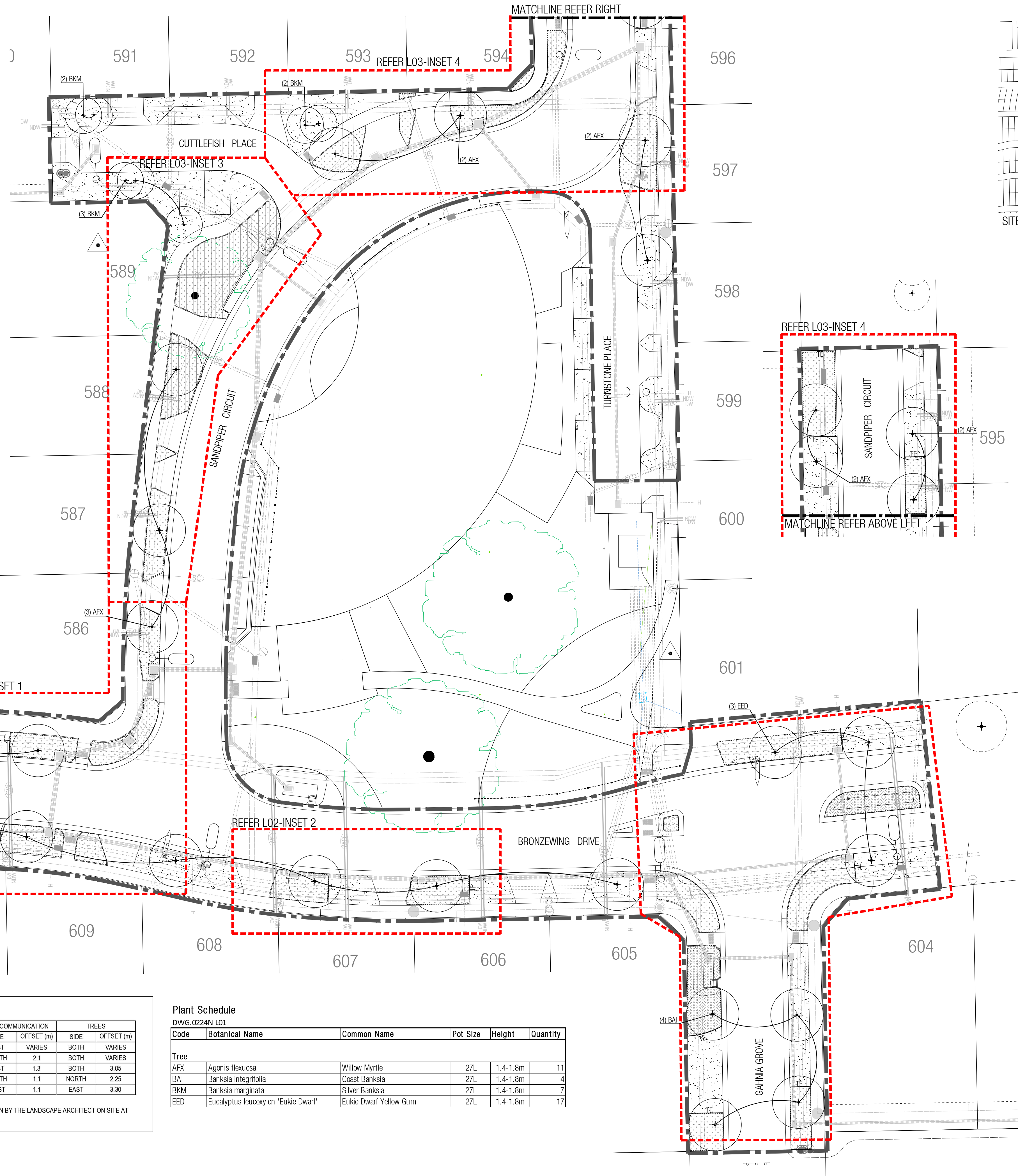


## LEGEND

	EXTENT OF WORK
	EXISTING TREE TO BE MAINTAINED AND PROTECTED
	PROPOSED TREE
	STAGE 12 TREE FOR REFERENCE (NOT PART OF THIS CONTRACT)
	*GARDEN BED WITH ORGANIC MULCH TYPE 1 (AS SPECIFIED)
	GARDEN BED WITH ORGANIC MULCH TYPE 2 (AS SPECIFIED)
	GARDEN BED WITH INORGANIC MULCH (AS SPECIFIED)
	TGSI (BY OTHERS)
	PRE-GROWN TURF (AS SPECIFIED)
	TIMBER EDGE (AS DETAILED & SPECIFIED)
	**EXISTING SERVICES
	LIGHT POLE

\*Refer L02-L04 for detailed planting plan.

\*\*Note: All underground services may not be shown. Refer to service offset and locations table and kerb markings before excavation commences.

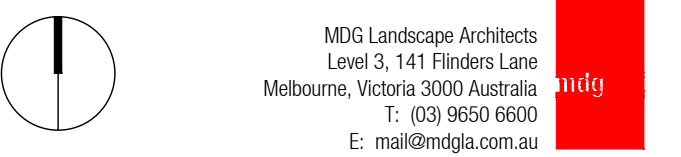


- SERVICES NOTE:
- THE LOCATION OF UNDERGROUND SERVICES SHOWN ON THIS DRAWING ARE APPROXIMATE ONLY. ACTUAL SITE CONDITIONS MAY VARY.
  - THE EXACT POSITIONS OF SERVICES SHOULD BE ESTABLISHED ON SITE PRIOR TO ANY WORKS COMMENCING.
  - NO GUARANTEE CAN BE GIVEN THAT ALL EXISTING SERVICES ARE SHOWN ON THIS PLAN. CONTRACTOR SHOULD REFER TO ENGINEERING DRAWINGS AND/OR CONTACT RELEVANT AUTHORITIES FOR MORE DETAILED INFORMATION REGARDING EXACT SERVICE LOCATION AND BOUNDARY OFFSETS.



- GENERAL NOTES:
- ALL SETOUTS SHALL BE CHECKED AND APPROVED ON SITE BY THE SUPERINTENDENT PRIOR TO CONSTRUCTION.
  - ANY DISCREPANCIES SHALL BE IMMEDIATELY REPORTED TO THE SUPERINTENDENT, WHO SHALL ISSUE FURTHER INSTRUCTIONS.
  - DO NOT SCALE DRAWINGS. FIGURED DIMENSIONS SHALL HAVE PRECEDENCE OVER SCALED DIMENSIONS.
  - ALL SHOP DRAWINGS SHALL BE SUBMITTED TO THE SUPERINTENDENT FOR APPROVAL PRIOR TO FABRICATION.
  - MATERIAL CODES SHALL HAVE PRECEDENCE OVER HATCHES WHERE CODES ARE NOT SHOWN, REFER TO HATCH TYPE. WHERE DISCREPANCIES OR OMITTED DATA OCCUR, REFER TO SUPERINTENDENT FOR DIRECTION.
  - ALL FABRICATED ITEMS SHALL BE INSPECTED AND APPROVED BY THE SUPERINTENDENT PRIOR TO INSTALLATION.
  - THE CONTRACTOR SHALL LOCATE ALL SUBSURFACE SERVICES ETC. PRIOR TO EXCAVATION AND PROTECT SAME DURING CONSTRUCTION.
  - SERVICES LOCATION SHOWN ARE INDICATIVE ONLY. LOCATE ALL SERVICES ON SITE PRIOR TO PLATING AND RELOCATE TREES TO 0.50M MIN. FROM SERVICES TO SUPERINTENDENT'S APPROVAL.
  - TREE LOCATIONS ARE TO BE CONFIRMED ON SITE BY COUNCIL PRIOR TO EXCAVATION AND INSTALLATION.

D	ISSUE FOR COUNCIL APPROVAL	BK	29.03.18
C	ISSUE FOR COUNCIL APPROVAL	BK	22.03.18
B	ISSUE FOR CLIENT APPROVAL	BK	15.03.18
A	PRELIMINARY	BK	07.03.18
REV.	DESCRIPTION	INT.	DATE



SEAGROVE

STAGE 13

DRAWING TITLE  
STAGE 13 STREETScape  
TREE PLANTING PLAN

DATE	SCALE
January 2018	1 : 250 @ A1
FILE PATH	
J:\Seagrove\6. Documentation\0244N Blue Tongue Common Park DD& Docs	
CHECKED	DRAWN
BM	BK
DRAWING NO.	REVISION
1347H L01	D

SERVICES OFFSET TABLE

ROAD NAME	GAS		WATER		RECYCLED WATER		ELECTRICITY		TELECOMMUNICATION		TREES	
	SIDE	OFFSET (m)	SIDE	OFFSET (m)	SIDE	OFFSET (m)	SIDE	OFFSET (m)	SIDE	OFFSET (m)	SIDE	OFFSET (m)
SANDPIPER CIRCUIT	WEST	VARIABLES	WEST	VARIABLES	WEST	VARIABLES	EAST	VARIABLES	EAST	VARIABLES	BOTH	VARIABLES
BRONZEWING DRIVE	NORTH	0.8	NORTH	1.4	NORTH	2	SOUTH	2.7	SOUTH	2.1	BOTH	VARIABLES
GAHNIA GROVE	WEST	2.1	WEST	2.4	WEST	2.9	EAST	1.8	EAST	1.3	BOTH	3.05
CUTTLEFISH PLACE	NORTH	1.1	NORTH	1.7	NORTH	2.3	SOUTH	1.7	SOUTH	1.1	NORTH	2.25
TURNSTONE PLACE	EAST	1.7	EAST	2.1	EAST	2.5	WEST	1.7	WEST	1.1	EAST	3.30

NOTE: - TREE PLANTING IS GENERALLY 1m (APPROX) OFFSET FROM BOK IN ROAD RESERVES, BUT ALL LOCATIONS ARE SUBJECT TO CONFIRMATION BY THE LANDSCAPE ARCHITECT ON SITE AT THE TIME OF PLANTING

## Plant Schedule

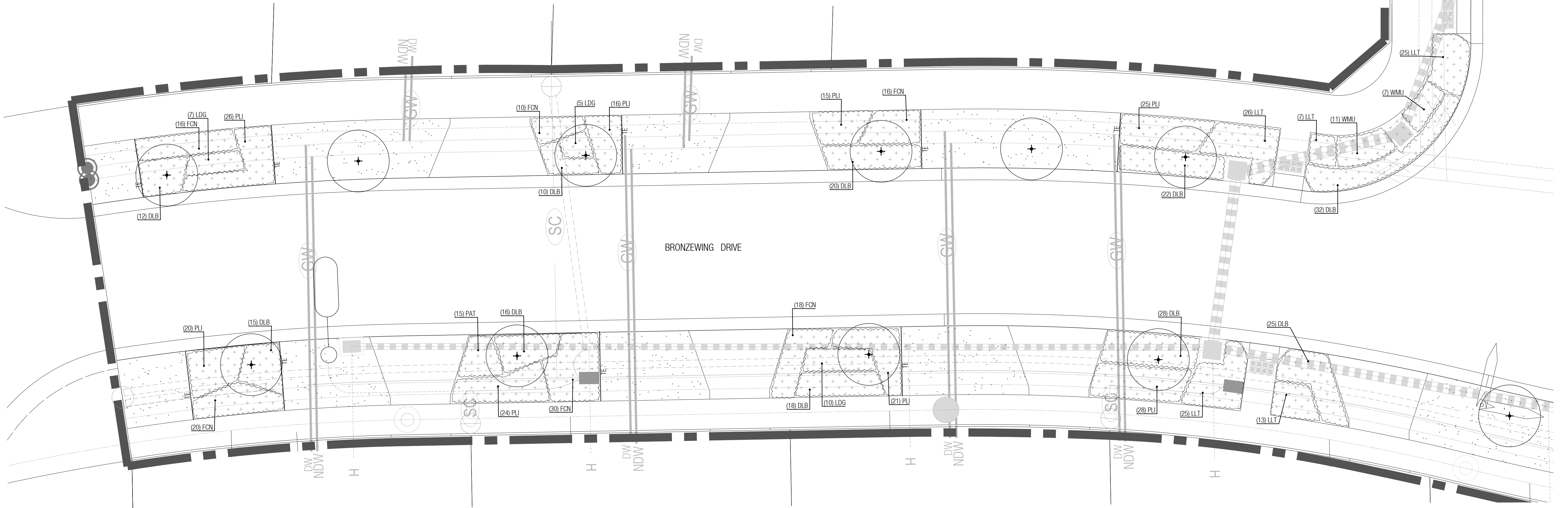
DWG.0224N L01

Code	Botanical Name	Common Name	Pot Size	Height	Quantity
Tree					
AFX	Agonis flexuosa	Willow Myrtle	27L	1.4-1.8m	11
BAI	Banksia integrifolia	Coast Banksia	27L	1.4-1.8m	4
BKM	Banksia marginata	Silver Banksia	27L	1.4-1.8m	7
EED	Eucalyptus leucocylon "Eukie Dwarf"	Eukie Dwarf Yellow Gum	27L	1.4-1.8m	17

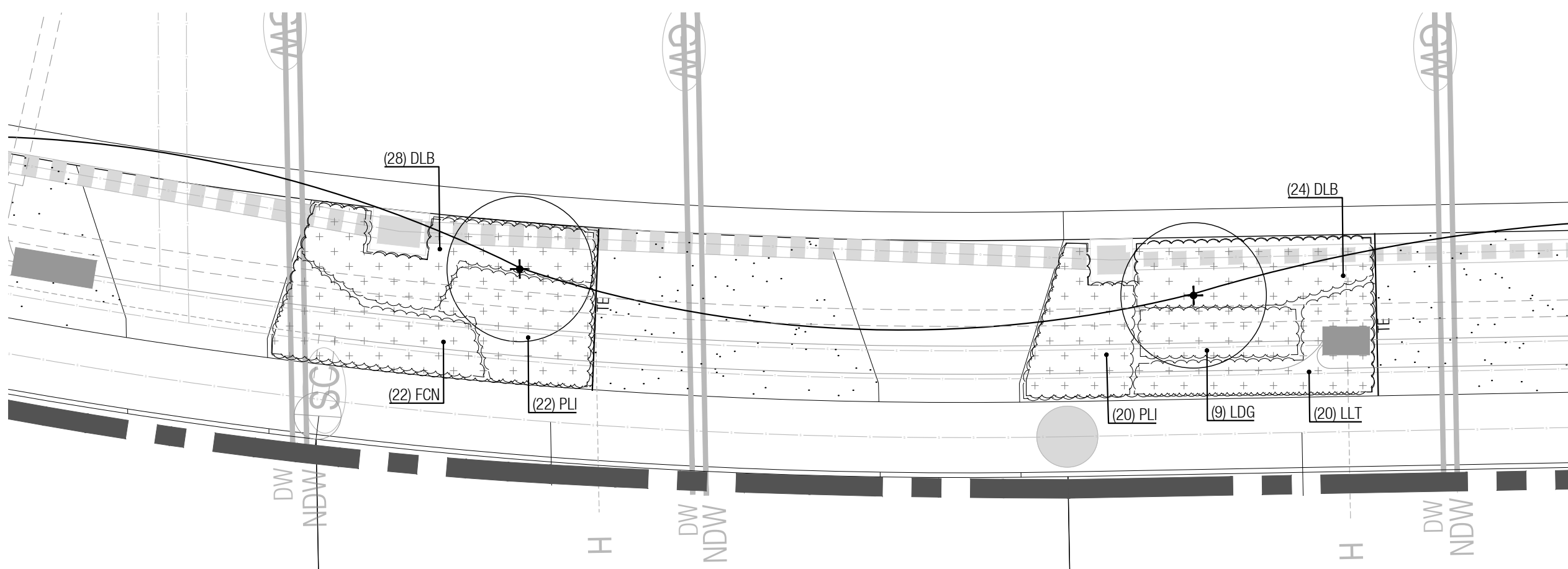




KEY PLAN



1 INSET 1 1:100



2 INSET 2 1:100

## LEGEND

- EXTENT OF WORK
- EXISTING TREE TO BE MAINTAINED AND PROTECTED
- \*PROPOSED TREE
- GARDEN BED WITH ORGANIC MULCH TYPE 1 (AS SPECIFIED)
- TGSI (BY OTHERS)
- PRE-GROWN TURF (AS SPECIFIED)
- TIMBER EDGE (AS DETAILED & SPECIFIED)
- \*\*EXISTING SERVICES
- LIGHT POLE

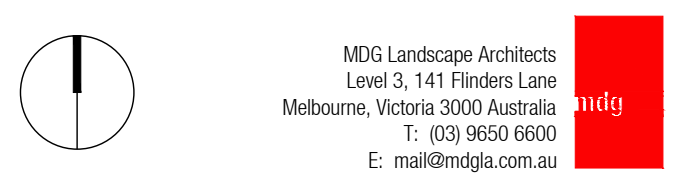
\* Refer L01  
\*\*Refer L04 for Planting Schedule  
\*\*\*Note: All underground services may not be shown. Refer to service offset and locations table (L01) and kerb markings before excavation commences.

- SERVICES NOTE:
- THE LOCATION OF UNDERGROUND SERVICES SHOWN ON THIS DRAWING ARE APPROXIMATE ONLY. ACTUAL SITE CONDITIONS MAY VARY.
  - THE EXACT POSITIONS OF SERVICES SHOULD BE ESTABLISHED ON SITE PRIOR TO ANY WORKS COMMENCING.
  - NO GUARANTEE CAN BE GIVEN THAT ALL EXISTING SERVICES ARE SHOWN ON THIS PLAN. CONTRACTOR SHOULD REFER TO ENGINEERING DRAWINGS AND/ OR CONTACT RELEVANT AUTHORITIES FOR MORE DETAILED INFORMATION REGARDING EXACT SERVICE LOCATION AND BOUNDARY OFFSETS.



- GENERAL NOTES:
- ALL SETOUTS SHALL BE CHECKED AND APPROVED ON SITE BY THE SUPERINTENDENT PRIOR TO CONSTRUCTION.
  - ANY DISCREPANCIES SHALL BE IMMEDIATELY REPORTED TO THE SUPERINTENDENT, WHO SHALL ISSUE FURTHER INSTRUCTIONS.
  - DO NOT SCALE DRAWINGS. FIGURED DIMENSIONS SHALL HAVE PRECEDENCE OVER SCALED DIMENSIONS.
  - ALL SHOP DRAWINGS SHALL BE SUBMITTED TO THE SUPERINTENDENT FOR APPROVAL PRIOR TO FABRICATION.
  - MATERIAL CODES SHALL HAVE PRECEDENCE OVER HATCHES WHERE CODES ARE NOT SHOWN, REFER TO HATCH TYPE. WHERE DISCREPANCIES OR OMITTED DATA OCCUR, REFER TO SUPERINTENDENT FOR DIRECTION.
  - ALL FABRICATED ITEMS SHALL BE INSPECTED AND APPROVED BY THE SUPERINTENDENT PRIOR TO INSTALLATION.
  - THE CONTRACTOR SHALL LOCATE ALL SUBSURFACE SERVICES ETC. PRIOR TO EXCAVATION AND PROTECT SAME DURING CONSTRUCTION.
  - SERVICES LOCATION SHOWN ARE INDICATIVE ONLY. LOCATE ALL SERVICES ON SITE PRIOR TO PLATING AND RELOCATE TREES TO 0.50M MIN. FROM SERVICES TO SUPERINTENDENTS APPROVAL.
  - TREE LOCATIONS ARE TO BE CONFIRMED ON SITE BY COUNCIL PRIOR TO EXCAVATION AND INSTALLATION.

D	ISSUE FOR COUNCIL APPROVAL	BK	29.03.18
C	ISSUE FOR COUNCIL APPROVAL	BK	22.03.18
B	ISSUE FOR CLIENT APPROVAL	BK	15.03.18
A	PRELIMINARY	BK	07.03.18
REV.	DESCRIPTION	INT.	DATE



## SEAGROVE STAGE 13

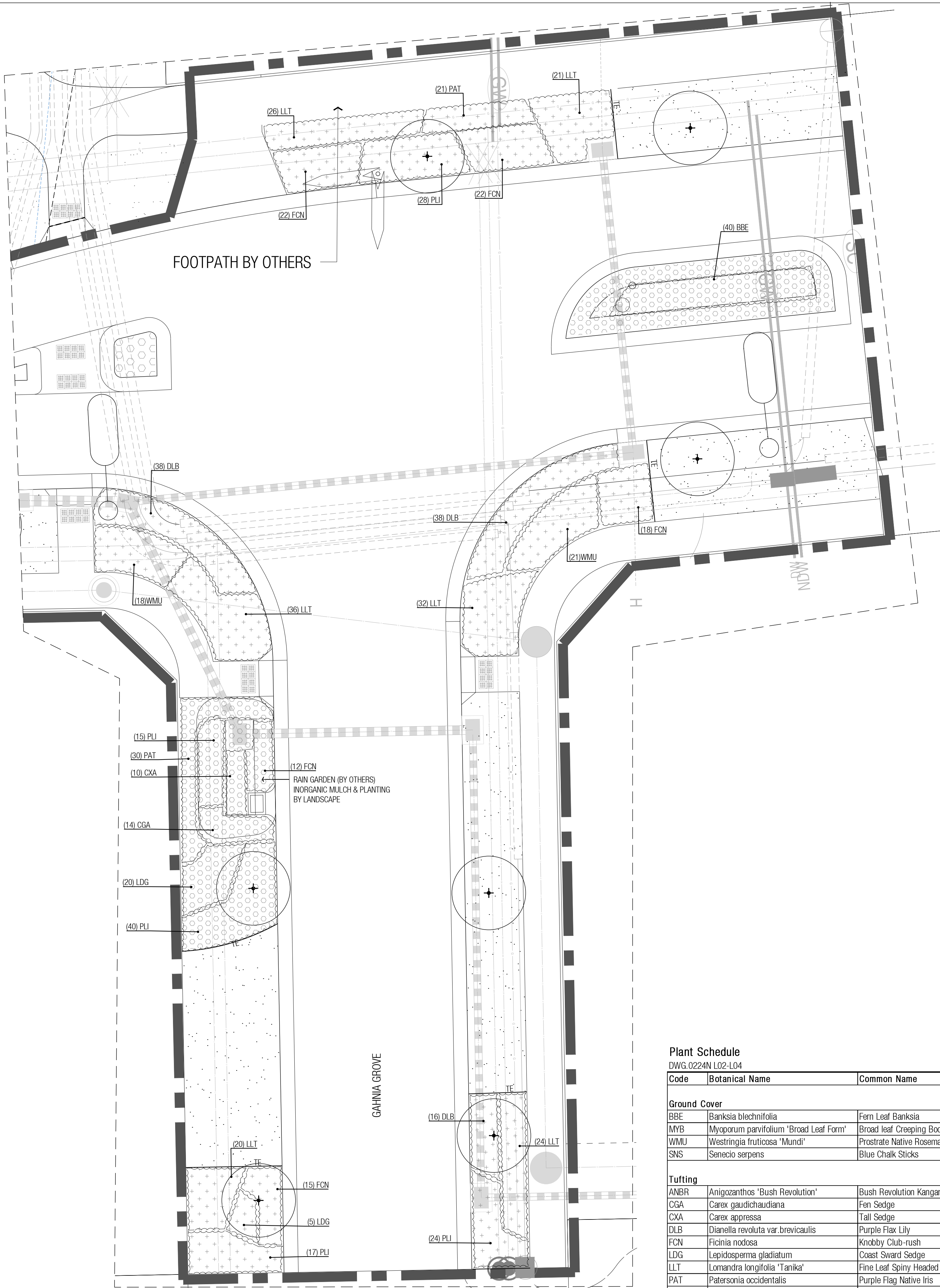
DRAWING TITLE		SCALE	
STAGE 13 STREETSCAPE		1:100 @ A1	
DETAILED PLANTING PLAN 1 OF 3			
DATE	January 2018	SCALE	1:100 @ A1
FILE PATH	J:\Seagrove\6. Documentation\0244N Blue Tongue Common Park D&D Docs	CHECKED	BK
DRAWING NO.	1347H L02	REVISION	D





DATE	SCALE
January 2018	1 : 100 @ A1
FILE PATH	
J:\Seagrove\6. Documentation\0244N Blue Tongue Common Park DD& Docs	
CHECKED	DRAWN
BM	BK
DRAWING NO.	REVISION
1347H L03	D





**FINISHES SETOUT  
LEGEND**

- EXTENT OF WORK
- EXISTING TREE TO BE MAINTAINED AND PROTECTED
- PROPOSED TREE
- GARDEN BED WITH ORGANIC MULCH TYPE 1 (AS SPECIFIED)
- GARDEN BED WITH INORGANIC MULCH (AS SPECIFIED)
- TGS (BY OTHERS)
- PRE-GROWN TURF (AS SPECIFIED)
- TIMBER EDGE (AS DETAILED & SPECIFIED)
- \*EXISTING SERVICES
- LIGHT POLE

\* Refer L01  
\*\* Refer L04 for Planting Schedule  
\*\*\* Note: All underground services may not be shown. Refer to service offset and locations table (L01) and kerb markings before excavation commences.



- SERVICES NOTE:**
- THE LOCATION OF UNDERGROUND SERVICES SHOWN ON THIS DRAWING ARE APPROXIMATE ONLY. ACTUAL SITE CONDITIONS MAY VARY.
  - THE EXACT POSITIONS OF SERVICES SHOULD BE ESTABLISHED ON SITE PRIOR TO ANY WORKS COMMENCING.
  - NO GUARANTEE CAN BE GIVEN THAT ALL EXISTING SERVICES ARE SHOWN ON THIS PLAN. CONTRACTOR SHOULD REFER TO ENGINEERING DRAWINGS AND/OR CONTACT RELEVANT AUTHORITIES FOR MORE DETAILED INFORMATION REGARDING EXACT SERVICE LOCATION AND BOUNDARY OFFSETS.



- GENERAL NOTES:**
- ALL SETOUTS SHALL BE CHECKED AND APPROVED ON SITE BY THE SUPERINTENDENT PRIOR TO CONSTRUCTION.
  - ANY DISCREPANCIES SHALL BE IMMEDIATELY REPORTED TO THE SUPERINTENDENT, WHO SHALL ISSUE FURTHER INSTRUCTIONS.
  - DO NOT SCALE DRAWINGS. FIGURED DIMENSIONS SHALL HAVE PRECEDENCE OVER SCALED DIMENSIONS.
  - ALL SHOP DRAWINGS SHALL BE SUBMITTED TO THE SUPERINTENDENT FOR APPROVAL PRIOR TO FABRICATION.
  - MATERIAL CODES SHALL HAVE PRECEDENCE OVER HATCHES WHERE CODES ARE NOT SHOWN, REFER TO HATCH TYPE WHERE DISCREPANCIES OR OMITTED DATA OCCUR, REFER TO SUPERINTENDENT FOR DIRECTION.
  - ALL FABRICATED ITEMS SHALL BE INSPECTED AND APPROVED BY THE SUPERINTENDENT PRIOR TO INSTALLATION.
  - THE CONTRACTOR SHALL LOCATE ALL SUBSURFACE SERVICES ETC. PRIOR TO EXCAVATION AND PROTECT SAME DURING CONSTRUCTION.
  - SERVICES LOCATION SHOWN ARE INDICATIVE ONLY. LOCATE ALL SERVICES ON SITE PRIOR TO PLATING AND RELOCATE TREES TO 0.50M MIN. FROM SERVICES TO SUPERINTENDENT'S APPROVAL.
  - TREE LOCATIONS ARE TO BE CONFIRMED ON SITE BY COUNCIL PRIOR TO EXCAVATION AND INSTALLATION.

D	ISSUE FOR COUNCIL APPROVAL	BK	29.03.18
C	ISSUE FOR COUNCIL APPROVAL	BK	22.03.18
B	ISSUE FOR CLIENT APPROVAL	BK	15.03.18
A	PRELIMINARY	BK	07.03.18
REV.	DESCRIPTION	INT.	DATE

MDG Landscape Architects  
Level 3, 141 Flinders Lane  
Melbourne, Victoria 3000 Australia  
T: (03) 9650 6600  
E: mail@mdgla.com.au

## SEAGROVE STAGE 13

DRAWING TITLE  
STAGE 13 STREETSCAPE  
DETAILED PLANTING PLAN

DATE	SCALE
January 2018	1 : 100 @ A1
FILE PATH	
J:\Seagrove\6. Documentation\0244N Blue Tongue Common Park D0& Docs	
CHECKED	DRAWN
BM	BK
DRAWING NO.	REVISION
1347H L04	D