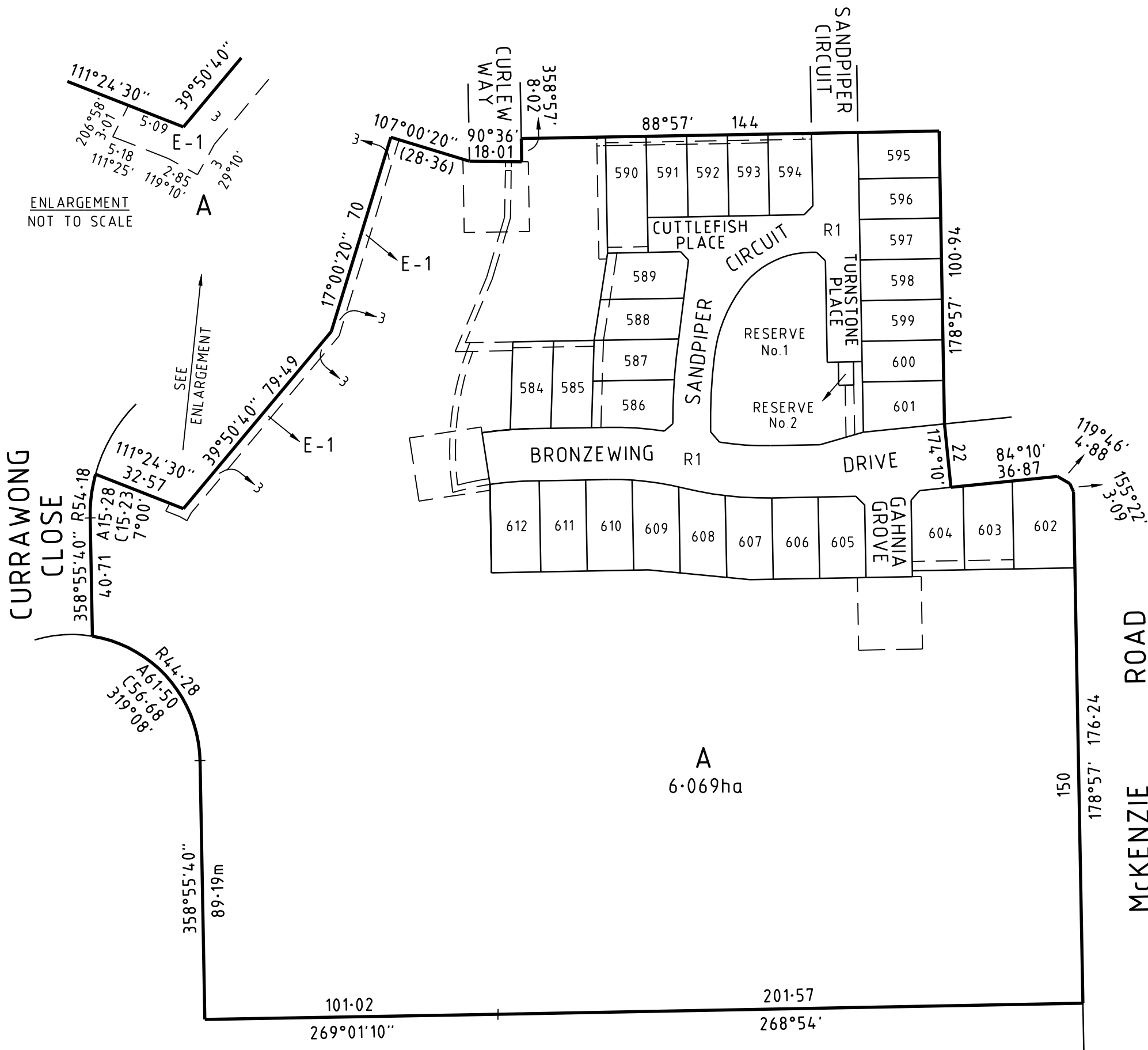
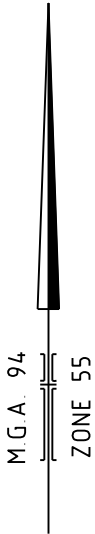


PLAN OF SUBDIVISION			EDITION 1	PS808680V	
<div>LOCATION OF LAND</div> <div><div>PARISH:</div><div>PHILLIP ISLAND AT COWES</div></div> <div><div>TOWNSHIP:</div><div>—</div></div> <div><div>SECTION:</div><div>—</div></div> <div><div>CROWN ALLOTMENT:</div><div>14 (PART) & 15 (PART)</div></div> <div><div>CROWN PORTION:</div><div>—</div></div> <div><div>TITLE REFERENCE:</div><div>VOL. FOL.</div></div> <div><div>LAST PLAN REFERENCE:</div><div>LOT A ON PS808677J</div></div> <div><div>POSTAL ADDRESS:</div><div>60 MCKENZIE ROAD</div><div>(at time of subdivision) COWES 3922</div></div> <div><div>MGA CO-ORDINATES:</div><div>E: 345 400</div><div>ZONE: 55</div><div>(of approx centre of land in plan) N 5741 900</div><div>GDA 94</div></div>			<div>Council Name: Bass Coast Shire Council</div> <div>Council Reference Number: 808680</div> <div>Planning Permit Reference: 110449</div> <div>SPEAR Reference Number: S100663A</div> <div>Certification</div> <div>This plan is certified under section 6 of the Subdivision Act 1988</div> <div>Public Open Space</div> <div>A requirement for public open space under section 18 of the Subdivision Act 1988 has been made and the requirement has not been satisfied at Certification</div> <div>Digitally signed by: BIMAL NARAYAN for Bass Coast Shire Council on 06/02/2018</div>		
VESTING OF ROADS AND/OR RESERVES			NOTATIONS		
IDENTIFIER	COUNCIL/BODY/PERSON		<div>LOT NUMBERS 1 TO 583 (BOTH INCLUSIVE) HAVE BEEN OMITTED FROM THIS PLAN.</div> <div>OTHER PURPOSES OF PLAN:</div> <div>TO REMOVE THAT PART OF THE SEWERAGE EASEMENT MARKED E-7 ON PS808677J, CREATED BY PS716652N THAT IS CONTAINED WITHIN THE ROAD R1 ON THIS PLAN.</div> <div>TO REMOVE THE CARRIAGEWAY EASEMENTS MARKED E-6 AND E-7 ON PS808677J CREATED IN PS716652N.</div> <div>VIDE AGREEMENT OF ALL PARTIES (SECTION 6(1)K SUBDIVISION ACT 1988)</div>		
R1 RESERVE No.1 RESERVE No.2	BASS COAST SHIRE COUNCIL BASS COAST SHIRE COUNCIL AUSNET ELECTRICITY SERVICES PTY LTD				
NOTATIONS					
DEPTH LIMITATION: DOES NOT APPLY.					
<div>SURVEY:</div> <div>This plan is based on survey.</div> <div>STAGING:</div> <div>This is not a staged subdivision.</div> <div>Planning Permit No.</div> <div>This survey has been connected to permanent marks No(s).</div> <div>In Proclaimed Survey Area No. —</div> <div>Estate: SEAGROVE</div> <div>Phase No.: 13</div> <div>No. of Lots: 29 + Lot A</div> <div>PHASE AREA: 2.202ha</div>					
EASEMENT INFORMATION					
LEGEND: A - Appurtenant Easement E - Encumbering Easement R - Encumbering Easement (Road)					
Easement Reference	Purpose	Width (Metres)	Origin	Land Benefited/In Favour Of	
E-1	DRAINAGE SEWERAGE	SEE DIAG. SEE DIAG.	PS701111J PS701111J	BASS COAST SHIRE COUNCIL WESTERNPORT REGION WATER CORPORATION	
E-2	DRAINAGE SEWERAGE	SEE DIAG. SEE DIAG.	PS728721D PS728721D	BASS COAST SHIRE COUNCIL WESTERNPORT REGION WATER CORPORATION	
E-3	CARRIAGEWAY	SEE DIAG.	PS728721D	BASS COAST SHIRE COUNCIL	
E-4	DRAINAGE CARRIAGEWAY	SEE DIAG. SEE DIAG.	PS728721D PS728721D	BASS COAST SHIRE COUNCIL BASS COAST SHIRE COUNCIL	
E-5	SEWERAGE DRAINAGE	SEE DIAG. SEE DIAG.	PS716652N THIS PLAN	WESTERNPORT REGION WATER CORPORATION BASS COAST SHIRE COUNCIL	
E-6	DRAINAGE	SEE DIAG.	THIS PLAN	BASS COAST SHIRE COUNCIL	
E-7	SEWERAGE	SEE DIAG.	PS716652N	WESTERNPORT REGION WATER CORPORATION	
E-8	SEWERAGE	SEE DIAG.	THIS PLAN	WESTERNPORT REGION WATER CORPORATION	
E-9	ELECTRICITY	SEE DIAG.	THIS PLAN - SECTION 88 ELECTRICITY INDUSTRY ACT 2000	AUSNET ELECTRICITY SERVICES PTY LTD	
E-10	DRAINAGE SEWERAGE	SEE DIAG. SEE DIAG.	THIS PLAN THIS PLAN	BASS COAST SHIRE COUNCIL WESTERNPORT REGION WATER CORPORATION	
E-11	CARRIAGEWAY	SEE DIAG.	THIS PLAN	BASS COAST SHIRE COUNCIL	
E-12	CARRIAGEWAY SEWERAGE	SEE DIAG. SEE DIAG.	THIS PLAN THIS PLAN	BASS COAST SHIRE COUNCIL WESTERNPORT REGION WATER CORPORATION	
E-13	CARRIAGEWAY DRAINAGE	SEE DIAG. SEE DIAG.	PS728721D THIS PLAN	BASS COAST SHIRE COUNCIL BASS COAST SHIRE COUNCIL	
<div>BW</div> <div>Beveridge Williams</div> <div>development & environment consultants</div> <div>Wonthaggi ph : 03 5672 1505</div> <div>www.beveridgewilliams.com.au</div>		SURVEYORS FILE REF: 4015/13 4015 PSUB Stage 13 V3.dwg		ORIGINAL SHEET SIZE: A3	SHEET 1 OF 4
		Digitally signed by: Adam Maher, Licensed Surveyor, Surveyor's Plan Version (5), 25/10/2017, SPEAR Ref: S100663A			

WARNING - This document is a working document in the SPEAR approval process. It is subject to revision and change and therefore should not be relied on. If you have any questions about this document please contact the person from Beveridge Williams & Co Pty Ltd who gave you access to SPEAR / this document. SPEAR Ref: S100663A 20/12/2018 02:54 pm



KEY DIAGRAM

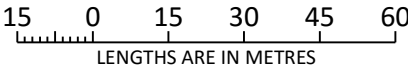
FOR LOTS 584 TO 612 (BOTH INCLUSIVE),
RESERVES & EASEMENTS SEE SHEETS 3 & 4



Beveridge Williams
development & environment consultants
Wonthaggi ph : 03 5672 1505
www.beveridgewilliams.com.au

SURVEYORS REF
4015/13

SCALE
1 : 1500



ORIGINAL SHEET
SIZE: A3

SHEET 2

Digitally signed by: Adam Maher, Licensed Surveyor,
Surveyor's Plan Version (5),
25/10/2017, SPEAR Ref: S100663A

Digitally signed by:
Bass Coast Shire Council,
06/02/2018,
SPEAR Ref: S100663A

