

Revision	Details	Date	App'd
A	Plans issued for construction	20.09.13	MC
P5	Plans Amended and Submitted to WPW and CFA	12.06.14	MC
P6	Plans Amended and Submitted to WPW	24.06.14	MC
P7	Plans Amended and Submitted to WPW	25.06.14	MC

**BEVERIDGE WILLIAMS & CO.**  
SURVEYORS  
PLANNERS  
ENVIRONMENTAL CONSULTANTS  
131 GORAM ST MONTAGGIO 3895  
PO BOX 1208 - TSB07 1895

**WESTERNPORT WATER**

2 Boys Home Rd Newhaven, Vic 3925  
P | 1300 720 711 F | 03 5956 4101  
westport@westernportwater.com.au  
ABN | 63 759 106 755

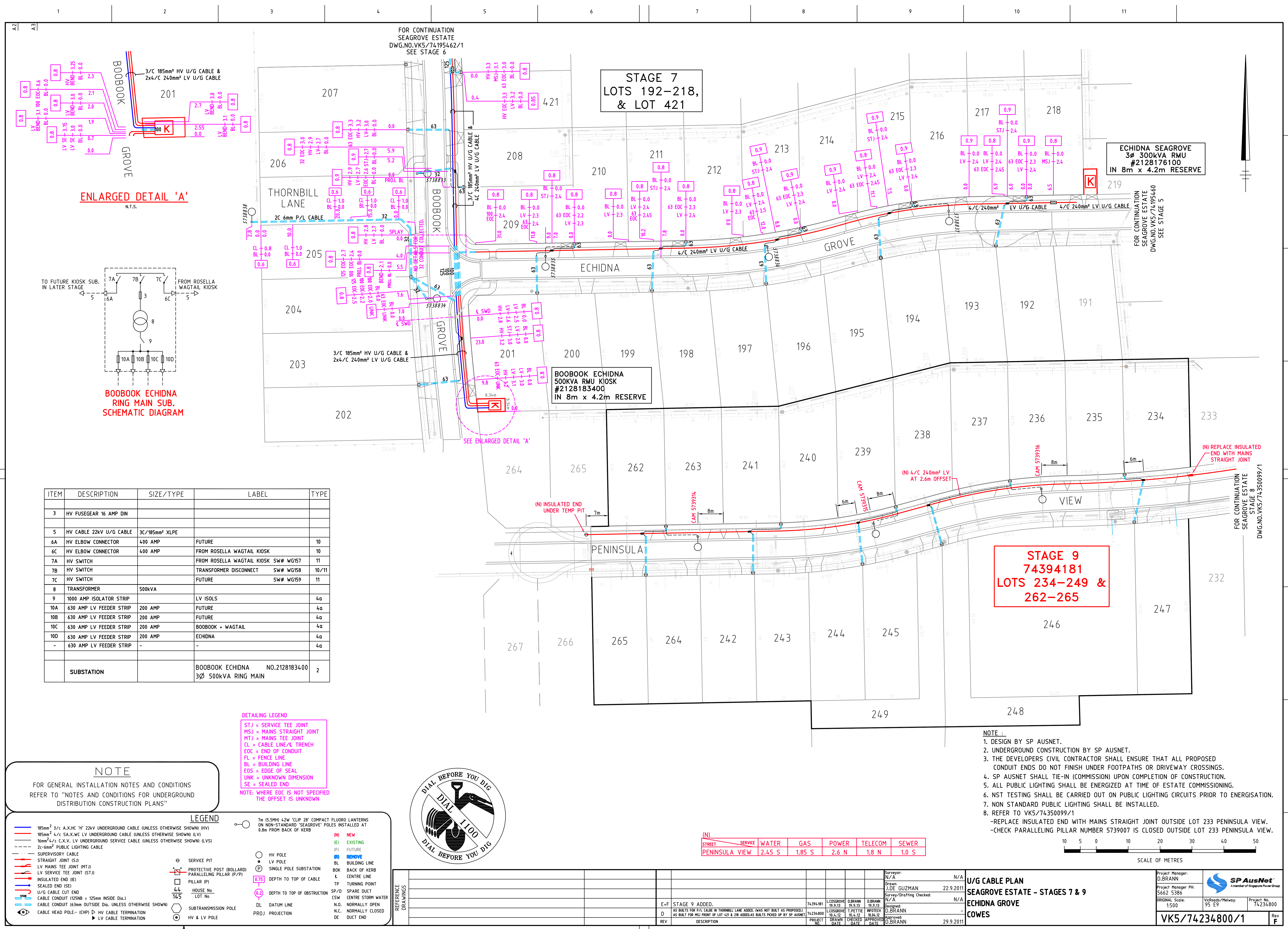
Drawn	M.JONES
Designed	M.JONES
Checked	M.COYNE
Date	13.05.2013
BW Ref	M4015-09-W

**WESTERNPORT WATER**  
**SEAGROVE ESTATE STAGE 9, COWES**  
**WATER RETICULATION EXTENSION**

DRG. NO.  
**W399**  
Sheet 2 of 2

**A1**





ITEM	DESCRIPTION	SIZE/TYPE	LABEL	TYPE
3	HV FUSEGEAR 16 AMP DIN			
5	HV CABLE 22kV U/G CABLE	3C/185mm² XLPE		
6A	HV ELBOW CONNECTOR	400 AMP	FUTURE	10
6C	HV ELBOW CONNECTOR	400 AMP	FROM ROSELLA WAGTAIL KIOSK	10
7A	HV SWITCH		FROM ROSELLA WAGTAIL KIOSK SW# WG157	11
7B	HV SWITCH		TRANSFORMER DISCONNECT SW# WG158	10/11
7C	HV SWITCH		FUTURE SW# WG159	11
8	TRANSFORMER	500KVA		
9	1000 AMP ISOLATOR STRIP		LV ISOLS	4a
10A	630 AMP LV FEEDER STRIP	200 AMP	FUTURE	4a
10B	630 AMP LV FEEDER STRIP	200 AMP	FUTURE	4a
10C	630 AMP LV FEEDER STRIP	200 AMP	BOOBOOK + WAGTAIL	4a
10D	630 AMP LV FEEDER STRIP	200 AMP	ECHIDNA	4a
-	630 AMP LV FEEDER STRIP	-	-	4a
SUBSTATION		BOOBOOK ECHIDNA NO.2128183400 3Ø 500KVA RING MAIN		2

**DETAILING LEGEND**  
STJ = SERVICE TEE JOINT  
MSJ = MAINS STRAIGHT JOINT  
MTJ = MAINS TEE JOINT  
CL = CABLE LINE/ TRENCH  
EOC = END OF CONDUIT  
FL = FENCE LINE  
BL = BUILDING LINE  
EOS = EDGE OF SEAL  
UNK = UNKNOWN DIMENSION  
SE = SEALED END  
NOTE: WHERE EOC IS NOT SPECIFIED THE OFFSET IS UNKNOWN

**NOTE**  
FOR GENERAL INSTALLATION NOTES AND CONDITIONS REFER TO "NOTES AND CONDITIONS FOR UNDERGROUND DISTRIBUTION CONSTRUCTION PLANS"

**LEGEND**

185mm² 3/c A.X.HC 'H' 22kV UNDERGROUND CABLE (UNLESS OTHERWISE SHOWN) (HV)  
185mm² 4/c S.A.X.WC LV UNDERGROUND CABLE (UNLESS OTHERWISE SHOWN) (LV)  
16mm² 4/c C.X.V. LV UNDERGROUND SERVICE CABLE (UNLESS OTHERWISE SHOWN) (LVS)  
32-cm² PUBLIC LIGHTING CABLE  
SUPERVISORY CABLE  
STRAIGHT JOINT (SJ)  
LV MAINS TEE JOINT (MTJ)  
LV SERVICE TEE JOINT (STJ)  
INSULATED END (IE)  
SEALED END (SE)  
U/G CABLE CUT END  
CABLE CONDUIT (125mm ± 125mm INSIDE Dia.)  
CABLE CONDUIT (63mm OUTSIDE Dia. (UNLESS OTHERWISE SHOWN))  
CABLE HEAD POLE - (ICHP) D HV CABLE TERMINATION  
LV CABLE TERMINATION

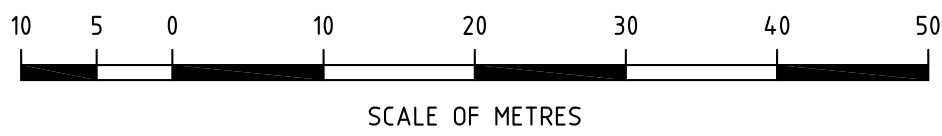
7m (5.5m) 42W 'CLIP 28' COMPACT FLUORO LANTERNS ON NON-STANDARD 'SEAGROVE' POLES INSTALLED AT 0.8m FROM BACK OF KERB

(N) NEW  
(E) EXISTING  
(F) FUTURE  
(R) REMOVE  
BL BUILDING LINE  
BOK BACK OF KERB  
CL CENTRE LINE  
TP TURNING POINT  
SP/D SPARE DUCT  
CSW CENTRE STORM WATER  
N.O. NORMALLY OPEN  
N.C. NORMALLY CLOSED  
DE DUCT END

SERVICE PIT  
PROTECTIVE POST (BOLLARD)  
PARALLELING PILLAR (P/P)  
PILLAR (P)  
HOUSE No.  
LOT No.  
SUBTRANSMISSION POLE  
HV & LV POLE

(N)	SERVICE	WATER	GAS	POWER	TELECOM	SEWER
PENINSULA VIEW		2.45 S	1.85 S	2.6 N	1.8 N	1.0 S

- NOTE :**
- DESIGN BY SP AUSNET.
  - UNDERGROUND CONSTRUCTION BY SP AUSNET.
  - THE DEVELOPERS CIVIL CONTRACTOR SHALL ENSURE THAT ALL PROPOSED CONDUIT ENDS DO NOT FINISH UNDER FOOTPATHS OR DRIVEWAY CROSSINGS.
  - SP AUSNET SHALL TIE-IN (COMMISSION) UPON COMPLETION OF CONSTRUCTION.
  - ALL PUBLIC LIGHTING SHALL BE ENERGIZED AT TIME OF ESTATE COMMISSIONING.
  - NST TESTING SHALL BE CARRIED OUT ON PUBLIC LIGHTING CIRCUITS PRIOR TO ENERGISATION.
  - NON STANDARD PUBLIC LIGHTING SHALL BE INSTALLED.
  - REFER TO VK5/74350099/1  
-REPLACE INSULATED END WITH MAINS STRAIGHT JOINT OUTSIDE LOT 233 PENINSULA VIEW.  
-CHECK PARALLELING PILLAR NUMBER 5739007 IS CLOSED OUTSIDE LOT 233 PENINSULA VIEW.



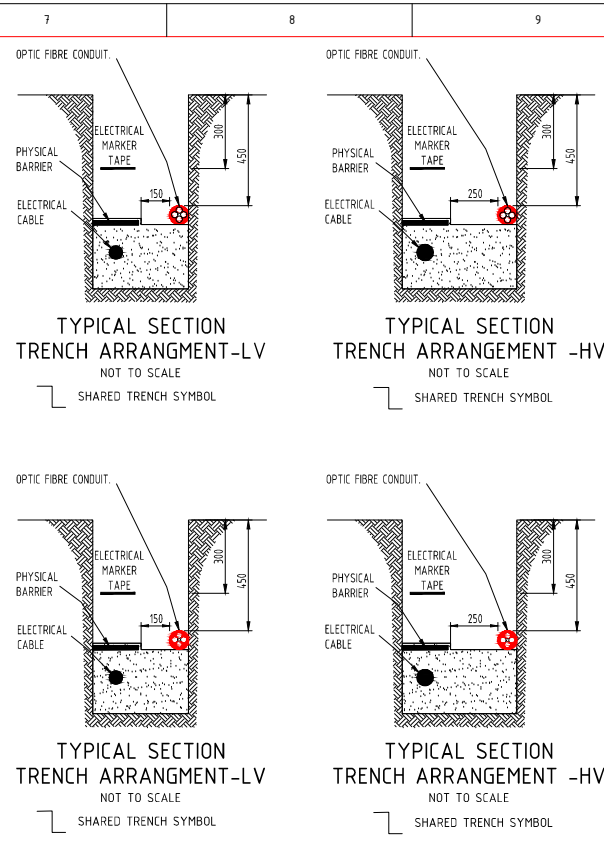
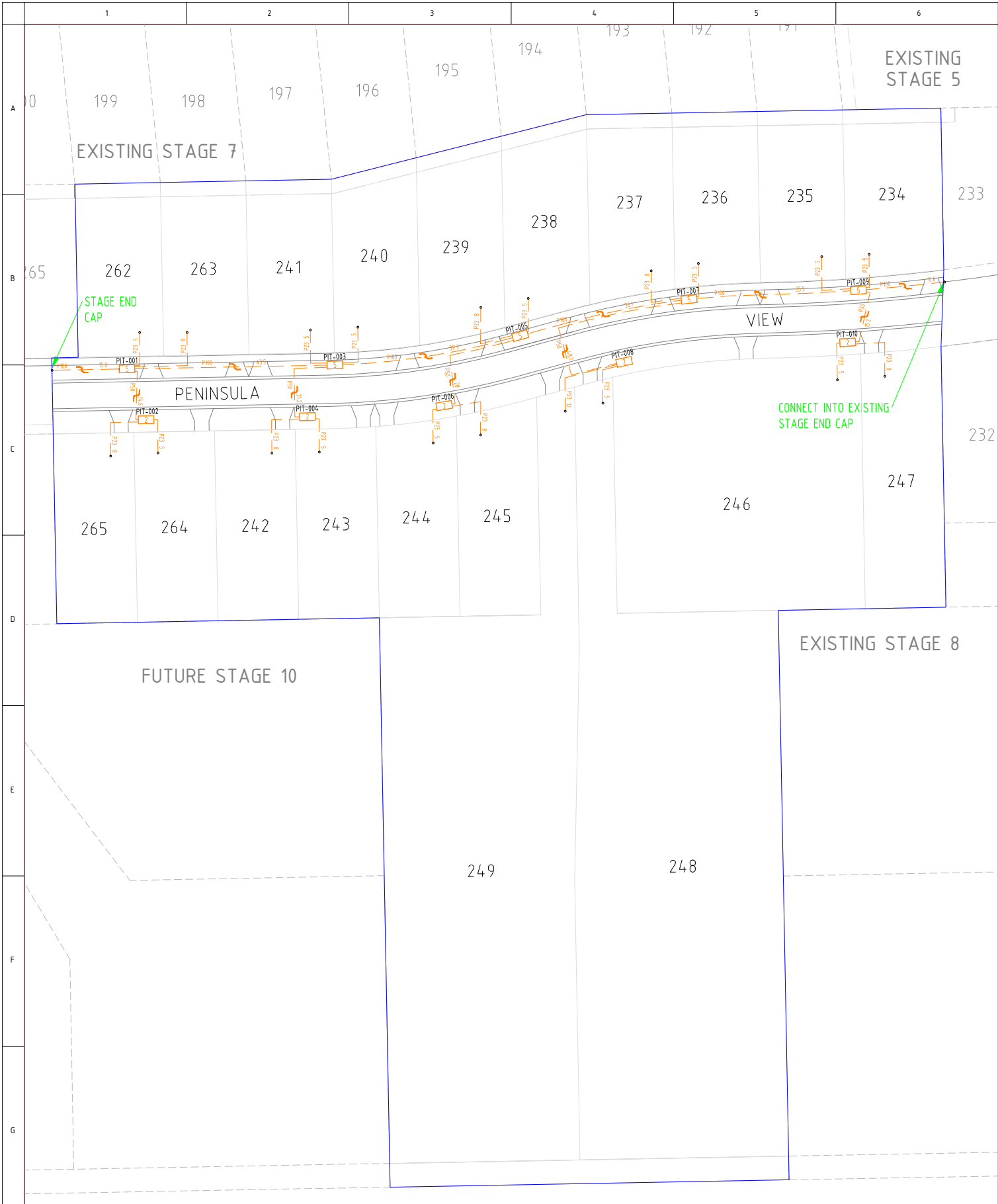
**U/G CABLE PLAN**  
**SEAGROVE ESTATE - STAGES 7 & 9**  
**ECHIDNA GROVE**  
**COWES**

Project Manager:  
D.BRANN  
Project Manager Ph:  
5662 5386  
ORIGINAL Scale:  
1:500  
VicRoads/Melway:  
95 E9  
Project No.  
74234800  
Rev  
F

VK5/74234800/1

Surveyor: N/A Drawn: J.DE GUZMAN Survey/Drafting Checked: N/A Designed: D.BRANN Approved: D.BRANN 22.9.2011 N/A 29.9.2011	E+ D REV	STAGE 9 ADDED. AS BUILT FOR P/L CABLE IN THORNHILL LANE ADDED. (WAS NOT BUILT AS PROPOSED) AS BUILT FOR MSJ FRONT OF LOT 421 & 210 ADDED/AS BUILT PICKED UP BY SP AUSNET	74394181 74234800 PROJECT NO.	L.O.S.GROVE 19.9.13 L.O.S.GROVE T.P.PETTIE 10.4.12 DRAWN DATE	O.BRANN 19.9.13 O.BRANN 10.4.12 CHECKED DATE	O.BRANN 19.9.13 O.BRANN 10.4.12 APPROVED DATE
---	----------------	--	-------------------------------------	---	--	---





PVC PIT TYPE AND SIZE			LENGTH	WIDTH	DEPTH
P2 SERVICE DROP BOUNDARY PIT			650MM	280MM	565MM
P5 SERVICE DROP NETWORK ACCESS PIT			700MM	450MM	650MM
P8 LOCAL NETWORK CONNECTION POINT			1360MM	555MM	860MM
P8 DISTRIBUTION POINT			1360MM	555MM	860MM
P9 FIBRE DISTRIBUTION HUB			2000MM	555MM	900MM

MINIMUM CLEARANCE FROM UNDERGROUND SERVICES TO OPTICAL FIBRE		
GAS- LARGE MAINS (OVER 100MM DIAMETER)		300MM
SMALL MAIN (75MM DIAMETER OR LESS)		150MM
ELECTRICAL- HIGH VOLTAGE		300MM
LOW VOLTAGE		100MM
WATER- HIGH CAPACITY MAINS		300MM
LOCAL RETICULATION		150MM
SEWER- MAINS		300MM
CONNECTION PIPE		150MM
OTHER TELECOMMUNICATION		100MM

CONDUIT DEPTH AND COVER		MINIMUM COVER
SERVICE DROP CONDUIT		300MM
VERGE		450MM
ROAD CROSSING		600MM
ROAD CROSSING CONTROLLED BY STATE AUTHORITY		800MM TO 1200MM

**APPROVED**

Sign: \_\_\_\_\_

Date: \_\_\_\_\_

**WARNING**

**BEWARE OF UNDERGROUND SERVICES**

THE LOCATION OF UNDERGROUND SERVICES ARE APPROXIMATE ONLY AND THEIR EXACT LOCATION SHOULD BE PROVEN ON SITE. NO GUARANTEE IS GIVEN THAT ALL EXISTING SERVICES ARE SHOWN.

**SAFETY FIRST**

**SAFETY STARTS WITH YOU**



- ### CONDUITS NOTES

ALL WORKS TO BE COMPLETED TO NBN.co DOCUMENT GUIDE NBN-TE-CTO-194.

  - COMMUNICATIONS CONDUITS AND ASSOCIATED FITTINGS TO BE SUPPLIED AND INSTALLED IN ACCORDANCE WITH AS/ACIF S008: 2006/AS/ACIF 254:2004, AS/ACIF S2009:2006 AND AS/NZS 2032:2006.
  - ALL CONDUITS SHALL BE WHITE AND LABELLED AS PER AS/ACIF S008: 2006 WITH ADDED DESCRIPTOR NBN Co.
  - COMBINATIONS OF BENDS WITH ANGLES OF 15°, 22.5° AND 30° ARE USED TO CHANGE THE DIRECTION OF THE 100MM CONDUIT WHERE REQUIRED.
  - CONDUITS JOINTS ARE ACHIEVED BY SOCKET AND SPIGOT OR COUPLER AND SEALED WITH SOLVENT CEMENT.
  - THE BEND RADIUS OF THE 100MM CONDUIT IS TO BE A MINIMUM OF 8 TIMES THE NOMINAL DIAMETER OF THE CONDUIT.
  - 50MM CONDUITS BENDS TO UTILIZED FOR LOCAL LATERAL CONDUITS USE A 90° BEND WHERE REQUIRED.
  - THE BEND RADIUS OF THE 50MM CONDUIT IS TO BE A MINIMUM OF 6 TIMES THE OUTER DIAMETER OF THE CONDUIT.
  - THE BEND RADIUS OF THE 23MM CONDUIT IS TO BE A MINIMUM OF 15 TIMES THE OUTER DIAMETER OF THE CONDUIT.
  - ALL CONDUITS ARE INSTALLED IN TRENCHES WITH MINIMUM SEPARATIONS FROM OTHER UTILITIES, AS PER ANY APPLICABLE LOCAL UTILITY REQUIREMENTS, LEGISLATIVE REQUIREMENTS, SHARED TRENCHING AGREEMENTS AND NBN Co APPROVAL.
  - SERVICE DROP CONDUITS FOR SINGLE DWELLING IS A WHITE 23MM PVC CONDUIT AND LABELLED AS AS/ACIF S008: 2006 WITH ADDED DESCRIPTOR OF NBN Co.
  - SERVICE DROP CONDUIT IS NOT INSTALLED MORE THAN ONE METER INSIDE THE LOT, THE LOCATION OF THE SERVICE DROP STUB SHOULD BE MARKED FOR BUILDERS TO LOCATE OR BY INSTALLING A BEND THAT POINTS UPWARDS SO THAT IT PROTRUDES THROUGH THE SURFACE OF THE GROUND.
  - SERVICE DROP CONDUIT IS SEALED AT BOTH ENDS USING PLASTIC DUCT COVERS AND FITTED WITH A DRAW STRING.
  - ALL INSTALLED CONDUIT ( EXCEPT THE SERVICE DROP CONDUITS ) REQUIRES TESTING VIA THE INSTALLATION OF A MANDREL WITH A DIAMETER OF NO LESS THE 80% OF THE INTERNAL DUCT DIAMETER. THIS MANDREL IS HAULED THROUGH TO CHECK FOR THE CONDUIT CONCENTRICITY AND CONTINUITY.
  - AFTER CONDUIT TESTING HAS BEEN PERFORMED, A DRAW STRING OR SIMILAR WILL BE INSTALLED WITH IN EACH CONDUIT EXCEPT FOR SERVICE DROP CONDUIT.
  - ONCE TESTING IS FINISHED AND THE CONDUIT INTEGRITY IS IDENTIFY AS ACCEPTABLE, ALL CONDUITS ARE SEALED USING PLASTIC DUCT COVERS.
  - 100MM WIDE SAFETY WARNING "COMMUNICATION" TAPE SHALL BE PLACED 300MM FROM FINAL GROUND.
- ### PIT NOTES

ALL WORKS TO BE COMPLETED TO NBN.co DOCUMENT GUIDE NBN-TE-CTO-194.

  - PITS AND PIT LIDS MUST HAVE A LOAD RATING SUITABLE FOR THE LOCATION IT IS INSTALLED IN AS PER AS3996 ACCESS COVERS AND GRATES.
  - PIT LIDS WILL BE LABELLED AS A COMMUNICATION PIT.
  - INSTALL PITS IN AN EASILY ACCESSIBLE LOCATION TO FACILITATE INSTALLATION AND OPERATIONAL TASKS.
  - POSITION PITS WITH THEIR LONG SIDE PARALLEL TO THE ADJACENT PROPERTY BOUNDARY OR ROADWAY.
  - USE PIT BEDDING AND BACKFILL AS PER SPECIFICATION.
  - CONFORM TO SLOPE AND GROUND LEVEL WHEN REINSTATING.
  - ENSURE A PIT IS INSTALLED WHERE CONDUIT CHANGE DIRECTION.
  - PITS SHOULD NOT BE INSTALLED:
    - (A) IN UNMADE SECTIONS OF CARRIAGEWAYS
    - (B) WITHIN FIVE METERS OF A CORNER OF A STREET OR IN VEHICULAR ACCESS WAYS
    - (C) WITHIN THREE METERS FROM ANY POLE
    - (D) OUTSIDE A DOOR WAY
    - (E) WITHIN ONE METER OF ANY ACCESS WAYS OR DRIVEWAYS
    - (F) IN ROADWAY AREAS
    - (G) ON ROADS EDGES
    - (H) IN A HAZARDOUS AREA
  - SEAL ALL ENTRIES BETWEEN THE CONDUITS INTO NBN Co PITS.
  - DISTRIBUTION CONDUIT ARE INSTALLED AT THE LOWEST POINT OF PIT END WALL.
  - CONDUITS THAT ARE ROAD CROSSING OR DIRECTION CHANGE TO PLACED ON ROAD SIDE OF PIT.
  - CONDUITS THAT ARE PROPERTY SERVICE CONDUITS ARE PLACES ON PROPERTY SIDE OF PITS ABOVE ALL LOCAL AND AND DISTRIBUTION CONDUITS.
  - ENTER PITS VIA THE END OF PIT ONLY.
  - ALL CONDUITS ENTERING PITS TO HAVE AT LEAST 50MM OF SPACE BETWEEN THE EXTERIOR AND BOTTOM OF PIT AND 25MM MINIMUM SPACING REQUIRED BETWEEN DUCTS.
  - ALL CONDUITS ENTERING PITS TO BE FINISHED SQUARE AND TO BE FITTED WITH BUSHES WITH THE PIT WALL END.

BILL OF MATERIAL				
NO OF LOTS: 20				
PITS		DUCTS		
SIZE	QTY	SIZE	QTY	MTRS
2	5	P100	6	186.8
5	5	P50	5	127.2
8	0	P23	20	128
9	0			
TOTAL NUMBER OF PITS: 10				
TOTAL NUMBER OF CONDUITS: 31				
TOTAL LENGTH OF CONDUITS: 442				

SERVICE OFFSET TABLE

SERVICE		SHARED TRENCH											
		WATER		SEWER		TELECOM		ELECTRICITY		GAS		LIGHTING	
STREET		OFFSET	LOCATION	OFFSET	LOCATION	OFFSET	LOCATION	OFFSET	LOCATION	OFFSET	CATEGORY	OFFSET	CATEGORY
PENINSULA VIEW		2.45	SOUTH	1.0	SOUTH	1.80	NORTH	2.60	NORTH	1.85	SOUTH	0.8 BOX	P4

NOTE: OFFSETS ARE FROM ROAD RESERVE BOUNDARY

**\*\*ATTENTION\*\***

**CONSTRUCTORS DO NOT**

**change or alter job**

**specifications unless first**

**checking with designer.**

P1	15/01/14	J.O'LOUGHLIN	PIT AND PIPE DESIGN	
REV	DATE	DRAFTER	DESCRIPTION	APPROVED

NBNCO APPROVAL RECORD:

SIGNATURE	DATE
<input type="checkbox"/> DD	_____
<input type="checkbox"/> WD	_____
<input type="checkbox"/> AB	_____

QUALITY RECORD :

NBNCO DISCLAIMER

THIS DOCUMENT HAS BEEN PREPARED SOLELY FOR THE USE OF NBNCO LIMITED (ABN 86 136 533 741) FOR USE IN MAINTAINING NBNCO FACILITIES. IT HAS NOT BEEN CREATED FOR ANY OTHER USE. IT SHOULD NOT BE SEALED TO LOCATE NBNCO ASSETS. NO WARRANTY IS GIVEN THAT THE INFORMATION IS ACCURATE OR COMPLETE.

KEY PLAN

DRAWING TITLE:

**SOUTHERN SUSTAINABLE DEVELOPMENTS**

**SEAGROVE ESTATE**

**PENINSULA VIEW, COWES**

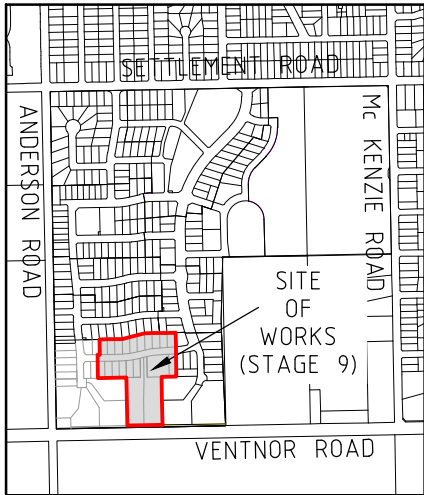
**STAGE 9 - 20 LOTS**

STATE:	VIC	REGION:	BASS COAST
FSM:		FDA:	

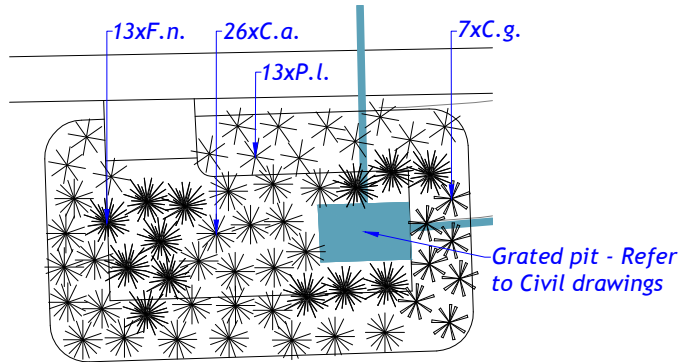
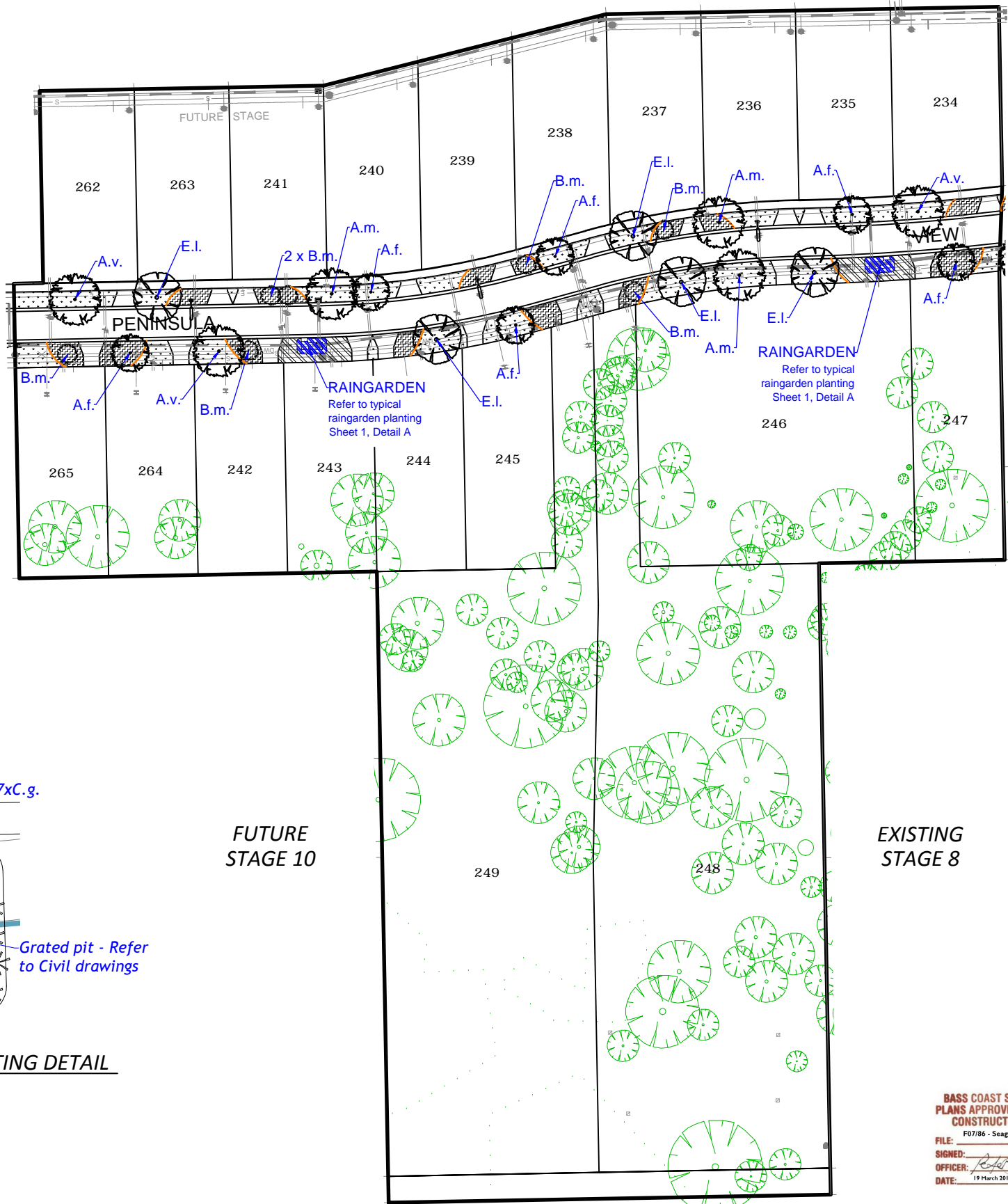
PROJECT No: AYCA-15PV7H

CADREF No: M4015-9

SCALE	SHEET No.	OF	REV.
	1	2	P1



KEY PLAN (NOT TO SCALE)



A TYPICAL RAINGARDEN PLANTING DETAIL  
1 SCALE 1:10 (A3) / 1:20(A1)

FOR COUNCIL APPROVAL

**LEGEND**

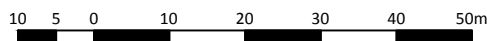
- EXISTING TREE TO BE RETAINED & PROTECTED
- PROPOSED TREES & SHRUBS
- TERRESTRIAL PLANTING (SHREDDED EUCAMULCH)
- PLANTING IN 'TARRAWINGEE PEBBLES' GRAVEL MULCH
- RAINGARDEN PLANTING IN 'TARRAWINGEE PEBBLES' GRAVEL MULCH (Ephemeral zone) Refer Detail A, Sheet 1
- GRASS (SEEDED)
- DRAINAGE
- SERVICES
- ELECTRICITY / STREET LIGHTS
- STAGE 9 BOUNDARY
- TIMBER EDGE Refer Detail C, Sheet 4

GENERAL NOTES

1. Refer to Landscape Specification by Beveridge Williams.
2. The Landscape Contractor must refer to civil engineering drawings for set out of roads and carpark and all infrastructure.
3. This plan is intended for soft landscaping and associated landscape materials and must not be used for any other purposes.
4. All survey information supplied is assumed to be correct.
5. The Landscape Contractor must verify all dimensions and areas prior to commencing any work or placing any orders for materials.
6. The Landscape Contractor must determine the location of all underground services prior to commencing any work on site and shall be liable for any damage to services or conduits.
7. The Landscape Contractor must immediately report any perceived errors or omissions in the landscape drawings to the Project Manager and Client.
8. Where any conflict occurs between proposed tree locations and infrastructure, such as light poles or powerlines, tree(s) must be relocated or removed.
9. The Landscape Contractor must confirm all plant quantities prior to ordering.
10. Grassed nature strips as specified.
11. Refer to Sheet 4 - LANDSCAPE DETAILS - for Establishment & Maintenance Notes
12. Refer to Sheets 2 & 3 - LANDSCAPE PLANS - for Driveway Crossover and Timber Garden Edge notes

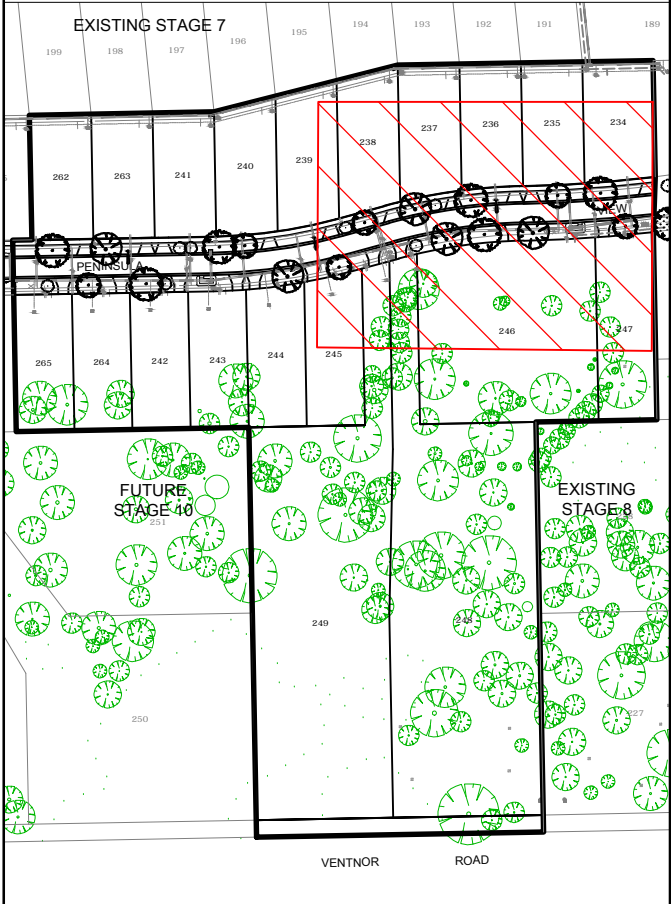
PLANT SCHEDULE						
CODE	BOTANICAL NAME	COMMON NAME	HEIGHT X WIDTH	% MIX & DENSITY	POT SIZE	QTY
Street Trees						
A.f.	Agonis flexuosa	Willow Myrtle	7-9x4-5m	-	400mm	6
A.m.	Acacia melanoxylon	Blackwood	12-16x5-7m	-	45L	3
A.v.	Allocasuarina verticillata	Drooping Sheoke	5-8x4-7m	-	45L	3
B.m.	Banksia marginata	Sliver Banksia	2x1.8m	-	400mm	7
E.l.	Eucalyptus leucosylon 'Eukie Dwarf'	Dwarf Yellow Gum	9-10x7-9m	-	400mm	5
Terrestrial Planting (Street planting) - Tussocks & groundcovers						
D.r.	Dianella revoluta var brevicaulis	Black-anther Flax Lily	0.8x0.8m	-	Tube	161
F.n.	Ficinia nodosa	Knobby Club-Rush	1x0.8m	-	Tube	104
L.g.	Lepidosperma gladiatum	Coast Sword Sedge	1x1.5m	-	Tube	43
L.l.	Lomandra Tanika	Spiney Headed Mat Rush	1x1.2m	-	Tube	72
P.o.	Patersonia occidentalis	Purple Flag	0.3x0.5m	-	Tube	165
P.l.	Poa labillardieri	Common Tussock Grass	1x1m	-	Tube	167
Ephemeral Rain garden						
C.a.	Carex appressa	Tall Sedge	0.8X0.7m	22% @ 4/m <sup>2</sup>	Tube	52
C.g.	Carex gaudichaudiana	Fen Sedge	0.8X0.5m	22% @ 4/m <sup>2</sup>	Tube	14
F.n.	Ficinia nodosa	Knobby Club Rush	1x0.8m	44% @ 4/m <sup>2</sup>	Tube	26
P.l.	Poa labillardieri	Common Tussock - Grass	0.8X0.8m	12% @ 4/m <sup>2</sup>	Tube	26

BASS COAST SHIRE  
PLANS APPROVED FOR  
CONSTRUCTION  
F07/86 - Seagrove sc9  
SIGNED: [Signature]  
OFFICER: [Signature]  
DATE: 19 March 2014





KEY PLAN (NOT TO SCALE)



GENERAL NOTES

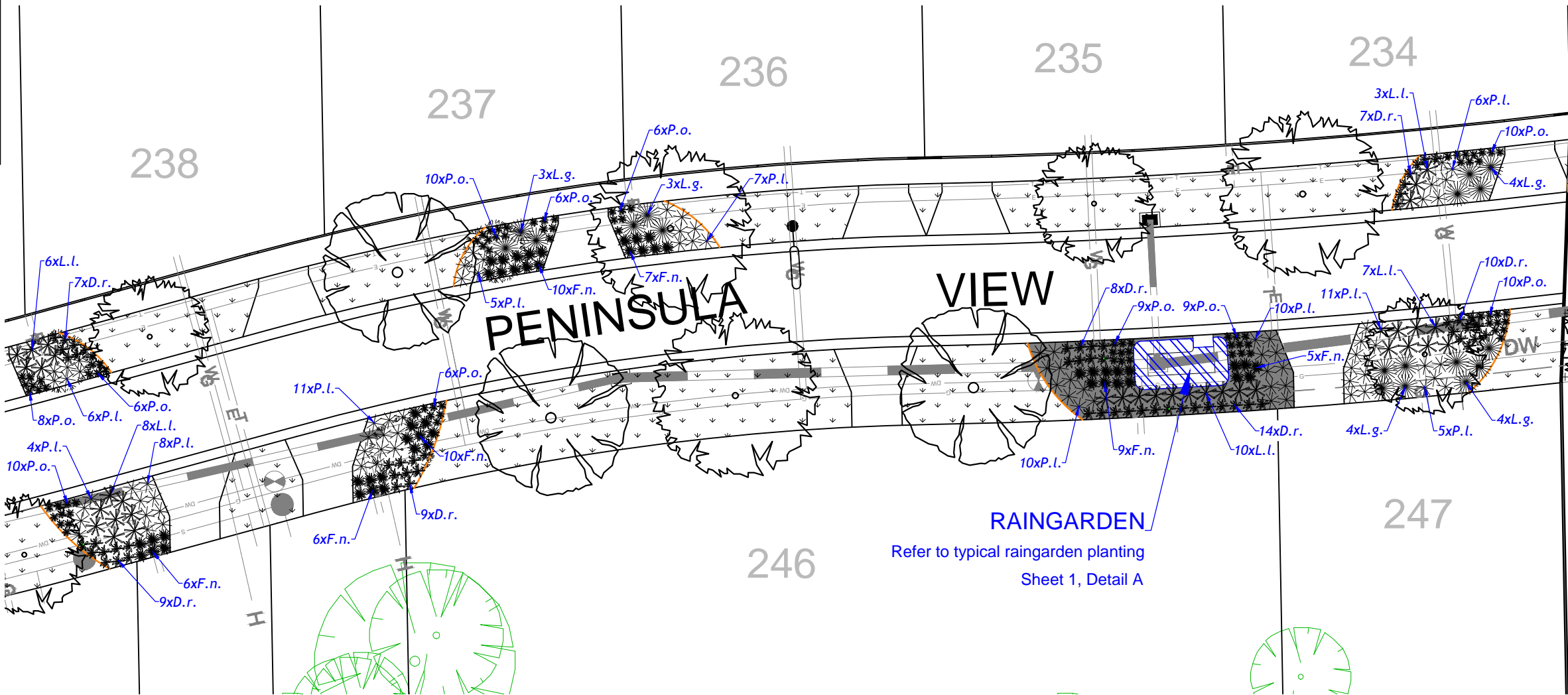
1. Refer to Sheet 1 - LANDSCAPE PLAN - for Plant Schedule
2. Refer to Sheet 4 - LANDSCAPE DETAILS - for Landscape Details
3. Refer to Sheet 1 - LANDSCAPE PLAN - for street tree species and Typical Raingarden Planting Detail
4. DRIVEWAY CROSSOVERS;  
Where any Crossover is not constructed at the time works being undertaken these areas shall be hydromulched to the same specifications as other indicated Grass (Hydromulch) areas.  
The cost of this extra hydromulching shall be considered as a variation at the same rate as Grassing has been allowed for in the agreed Bill of Quantities.

ESTABLISHMENT & MAINTENANCE NOTES

1. The site is to be cleared of all debris and builder's rubble. All weed species shall be eradicated by spot spraying with approved herbicide and hand pulling. Pre-planting weed control must be undertaken no less than six weeks prior to planting.
2. Approved site or imported topsoil shall be incorporated into garden beds. A 'Landscape Blend' soil mix or any weed free sandy loam/clay mix with added compost, should be added to a depth of approximately 200mm.
3. Plants species shall be true to type and there should be no alterations or substitution of nominated species or cultivars without the written consent of the Landscape Architect.
4. The Landscape Contractor must verify all plant quantities prior to ordering.
5. All plant stock shall be checked by the Contractor and must be healthy and disease free.
6. Planting must be undertaken in accordance with sound horticultural practices, with holes dug to a minimum 2.5 times the size of the root ball. Holes should be back-filled to top of root ball. Avoid excessive compaction of soil.
7. All plants must be thoroughly hand watered immediately after planting.
8. Slow release fertiliser, suitable for native species (eg. 9 month 'Osmocote') shall be applied at the time of planting in accordance with manufacturer's recommended dose rates and application methods.
9. Terrestrial Planting areas to be mulched to a minimum depth of 80mm with a eucamulch blend - refer to details.
10. Raingarden areas are to be mulched with 14-20mm size 'Tarrowingee Pebbles' gravel and lightly compacted to finished surface level of surrounding elements.
11. Grassed areas to be applied by Hydromulch method to mix as specified and achieve first cut & fertilise prior to Practical Completion.
12. 90x10mm flexible Redgum or treated Pine timber edge - refer to detail C - installed between grass & Terrestrial Planting / Raingarden.
13. Regular maintenance must be undertaken to remove weed species. Replace any dead or diseased plants as required. Follow up turf establishment and re-top dress and seed as required.

LEGEND

- EXISTING TREE TO BE RETAINED & PROTECTED
- PROPOSED TREES & SHRUBS  
Refer Detail A, Sheet 4
- PLANTING IN SHREDDED EUCAMULCH (Terrestrial Zone)  
Refer Detail B, Sheet 4
- RAINGARDEN PLANTING IN 'TARROWINGEE PEBBLES' GRAVEL MULCH (Ephemeral zone)
- PLANTING IN 'TARROWINGEE PEBBLES' GRAVEL MULCH (Terrestrial zone)
- GRASS (HYDROMULCH)
- DRAINAGE
- SERVICES
- ELECTRICITY / STREET LIGHTS
- TIMBER EDGE  
Refer Detail C, Sheet 4



FOR COUNCIL APPROVAL



© COPYRIGHT Beveridge Williams & CO Pty Ltd has granted a licence to the principal to use this document for its intended purpose. No unauthorized copying is permitted.				Client SOUTHERN SUSTAINABLE DEVELOPMENTS PTY LTD			
Rev				Description			
Date				By			
App.				Rev			
Description				Date			
By				App.			

Client  
SOUTHERN SUSTAINABLE DEVELOPMENTS PTY LTD

Project Name  
SEAGROVE ESTATE - STAGE 9 COWES

Drawing Title  
LANDSCAPE PLAN

Designed	C.BROSAN
Date	21.11.13
Drawn	C.BROSAN
Approved	J.GREEN
Date	21.11.13

**Beveridge Williams**  
development & environment consultants

1 Genferrie Road  
Malvern VIC 3161  
ph : 03 9524 8888  
www.beveridgewilliams.com.au

Scale	1:300(A3)
Project Ref.	A4015-09
Drawing No.	2/4
Rev.	-
Drawing Ref.	K:\JOBS DATA\4015 - SEAGROVE ESTATE\LAN\4015-SEAGROVE, COWES\CAD\4015-09 LP 20131121.DWG

